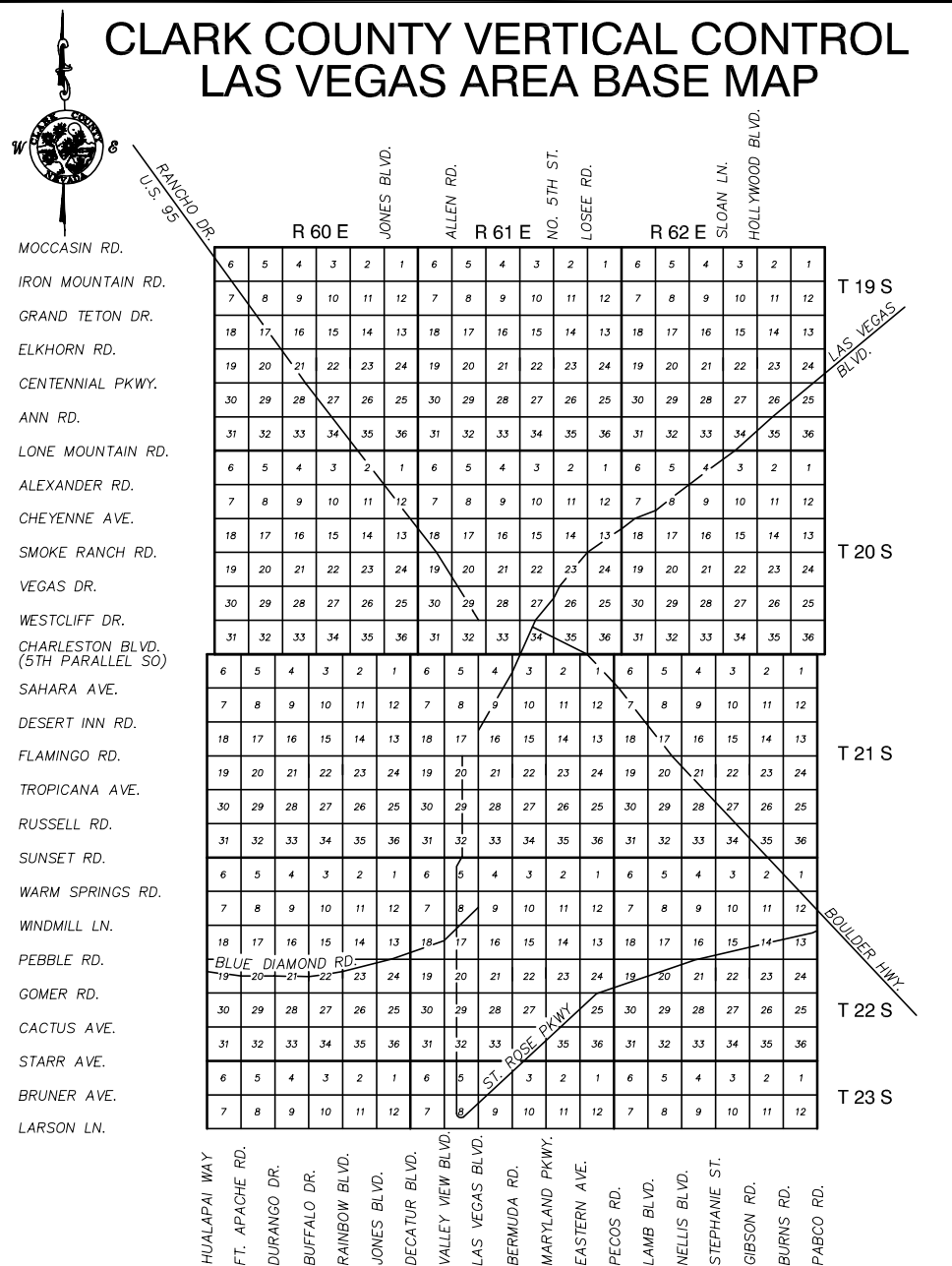


REVISED
09/01/2006

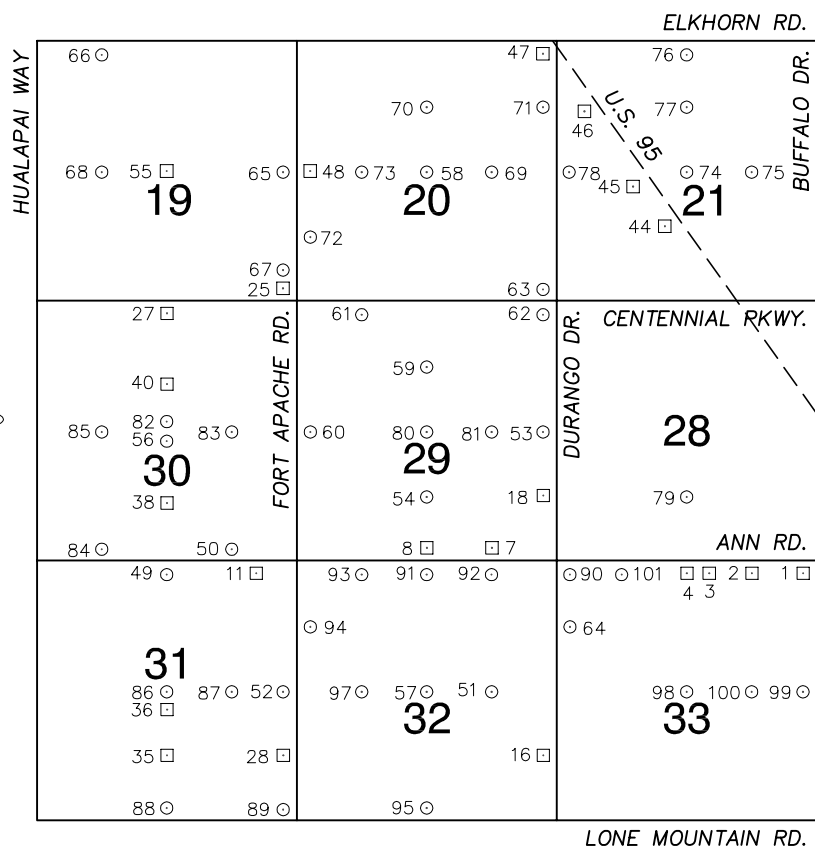
CLARK COUNTY SURVEYOR'S OFFICE
5051 SOUTH PARADISE ROAD
LAS VEGAS, NEVADA 89119
(702) 455-0640

CLARK COUNTY VERTICAL CONTROL v.2003 LAS VEGAS AREA BASE MAP

SHEET INDEX v.2003			REVISED 09-01-2006		
LOCATION	REVISED		LOCATION	REVISED	
13-70 ¹ SE	01-03				
14-67 SW	01-03				
	NE 01-03				
15-67 NW	01-03				
	SE 01-03				
16-56 ² NW	01-03				
16-67 ³ NE	09-06				
16-68 ³ NW	01-03				
	NE 01-03				
18-59 NW	01-03				
	SE 01-03				
	SW 01-03				
	NE				
18-60 NW					
	SE				
	SW 01-03				
	NE				
19-57 NW					
	SE 08-03				
	SW 08-03				
	NE				
19-58 NW					
	SE 08-03				
	SW 08-03				
	NE 01-03				
19-59 NW					
	SE 01-03				
	SW				
	NE 01-03				
19-60 NW					
	SE 01-03				
	SW 09-06				
	NE 01-03				
20-60 NW					
	SE 01-03				
	SW				
¹ = BUNKERVILLE AREA			⁴ = SEARCHLIGHT AREA		
² = INDIAN SPRINGS AREA			⁵ = SANDY VALLEY AREA		
³ = OVERTON AREA					



No.	STATION	ELEVATION (METERS)	DESCRIPTION	No.	STATION	ELEVATION (METERS)	DESCRIPTION
12	J 165 1935	391.225	FND USC&GS BRASS CAP, STAMPED J165 1935, (1' SUBSURFACE) 50' EAST OF THE RAILROAD TRACKS, AND 220' NORTH OF INGRAM AVE., UNDER A BARB WIRE FENCE 2.2' NORTH OF CONCRETE MARKER POST.	25	OC67 13N6 2000	386.624	SE T RIVET AND ROUND ALUMINUM PLATE IN TOP OF CURB, EAST SIDE OF MOAPA VALLEY BLVD. AND 90' SOUTHEAST OF THE PI OF MOAPA VALLEY BLVD. AND ANDERSEN ST. ± 25' FROM THE END OF CURB AND GUTTER.
13	OC67 13SW6 2000	392.996	SE T RIVET AND ROUND ALUMINUM PLATE IN A CONCRETE MONUMENT, 25' WEST OF THE RAILROAD TRACKS AND 270' NORTH OF PERKINS AVE. NEAR THE SOUTHEAST CORNER OF THE OLD RAILROAD DEPOT CONCRETE PAD.	26	3C67 13E6	385.579	FND 2" BRASS CAP, STAMPED "CCED MV 21", IN TOP OF CURB, SOUTHWEST PC OF MOAPA VALLEY BLVD. AND THOMAS AVE.
14	OC67 2N6 2000	403.871	SE T RIVET AND ROUND ALUMINUM PLATE IN A CONCRETE RETAINING WALL, 32' SOUTH OF THE SOUTH EAST E.O. OF MOAPA VALLEY BLVD. 1025' EAST OF PINWHEEL ST. IN FRONT OF 1897 MOAPA VALLEY BLVD.	27	3C67 13E6A	386.330	FND 2" BRASS CAP, STAMPED "CCED MV22", IN TOP OF CURB, SOUTHWEST PC OF MOAPA VALLEY BLVD. AND VIRGINIA AVE.
15	OC67 1NWS 2000	408.461	SE T RIVET AND ROUND ALUMINUM PLATE IN A CONCRETE MONUMENT, 12' EAST OF EAST E.O. OF YAMASHITA ST. 830' SOUTH OF RON AVE. 2' WEST OF GUARD RAIL END.	28	3C67 13SE6	387.026	FND 2" BRASS CAP, STAMPED "CCED MV23", IN TOP OF CURB, SOUTHWEST PC OF MOAPA VALLEY BLVD. AND PERKINS AVE. NEAR THE PC OF MOAPA VALLEY BLVD.
16	OC67 2NEE6 2000	403.185	SE T RIVET AND ROUND ALUMINUM PLATE IN THE SOUTH END OF A WING WALL OF YAMASHITA BRIDGE, SOUTHEAST CORNER OF MOAPA VALLEY BLVD. AND YAMASHITA BRIDGE.	29	3C67 13SE6A	386.459	FND 2" BRASS CAP, STAMPED "CCED MV24", IN TOP OF CURB, SOUTHWEST PC OF MOAPA VALLEY BLVD. AND ALMA AVE. NEAR THE PC OF MOAPA VALLEY BLVD.
17	OC67 1W4 2000	400.119	SE T RIVET AND ROUND ALUMINUM PLATE IN A CONCRETE ELEC. TRANSFORMER PAD, EAST SIDE OF MOAPA VALLEY BLVD. 1500' SOUTH OF YAMASHITA ST. IN FRONT OF A RED BRICK HOUSE.	30	OC67 2S4 2000	399.949	SE T RIVET AND ROUND ALUMINUM PLATE IN A CONCRETE MONUMENT, NORTHEAST CORNER OF COTTONWOOD AVE. AND HEYER ST. NEAR PP # (Lg C9910)
18	OC67 1SWW6 2000	397.546	SE T RIVET AND ROUND ALUMINUM PLATE IN A CONCRETE HEADWALL, EAST SIDE OF MOAPA VALLEY BLVD. 350' NORTH OF SCOTT AVE. 15' NORTH OF FENCE CORNER.	31	OC67 2SSE6 2000	398.050	SE T RIVET AND ROUND ALUMINUM PLATE IN A CONCRETE MONUMENT, NORTHEAST CORNER OF COTTONWOOD AVE. AND ST. JOSEPH ST. NEAR PP # (Lg C996)
19	OC67 11NES 2000	396.453	SE T RIVET AND ROUND ALUMINUM PLATE IN A CONCRETE HEADWALL, SOUTHWEST CORNER OF MOAPA VALLEY BLVD. AT COTTONWOOD AVE.	32	OC67 1SSW6 2000	395.307	SE T RIVET AND ROUND ALUMINUM PLATE IN A CONCRETE MONUMENT, NORTH SIDE OF COTTONWOOD AVE. 1320' EAST OF MOAPA VALLEY BLVD. BETWEEN A DOUBLE SET OF WOODEN POWER POLES.
20	OC67 11NEE6 2000	394.830	SE T RIVET AND ROUND ALUMINUM PLATE IN A CONCRETE MONUMENT, NORTHWEST CORNER OF MOAPA VALLEY BLVD. AND ANITA AVE. NEAR PP # (Lg C105)	33	OC67 1NW6 2000	415.576	SE T RIVET AND ROUND ALUMINUM PLATE IN A CONCRETE MONUMENT, NORTHEAST CORNER OF AIRPORT RD. AND LOU ST. 25' EAST OF THE EAST E.O. OF AIRPORT RD.
21	OC67 11E4 2000	392.742	SE T RIVET AND ROUND ALUMINUM PLATE IN A CONCRETE WATER VAULT, WEST SIDE OF MOAPA VALLEY BLVD. 210' SOUTH OF CATHERINE AVE.	34	OC67 1C4 2000	413.304	SE T RIVET AND ROUND ALUMINUM PLATE IN A CONCRETE MONUMENT, WEST SIDE OF ANDERSON ST. 260' SOUTH OF AIRPORT RD. NEAR POWER POLE # (Lg 8173)
22	OC67 11SEE6 2000	392.055	SE T RIVET AND ROUND ALUMINUM PLATE IN TOP OF CURB, SOUTH SIDE OF ENTRANCE TO OVERTON POWER DISTRICT 5' NORTH OF A FIRE HYDRANT.	35	OC67 1S6 2000	412.061	SE T RIVET AND ROUND ALUMINUM PLATE IN A CONCRETE MONUMENT, SOUTHWEST CORNER OF AIRPORT RD. AND WILLOW AVE. 8' SOUTHWEST OF E.O.
23	OC67 12SSW6 2000	389.794	SE T RIVET AND ROUND ALUMINUM PLATE IN TOP OF CURB, NORTHEAST CORNER OF MOAPA VALLEY BLVD. AND LA POINTE ST.	CLARK COUNTY VERTICAL CONTROL v.2003 CLARK COUNTY SURVEYOR'S OFFICE 5051 SOUTH PARADISE ROAD LAS VEGAS, NEVADA 89119 (702) 455-0640			
24	OC67 12S4 2000	386.761	SE T RIVET AND ROUND ALUMINUM PLATE IN TOP OF CURB, NORTH SIDE OF RYAN AVE. 450' EAST OF LOU DR. 10' WEST OF THE END OF CURB AND GUTTER.				
				CONVERSION FACTOR: METERS X $\left(\frac{3937}{1200}\right)$ = U.S. SURVEY FEET REVISED 09/01/2006			
				SHEET 2 OF 3 16-67 NE			



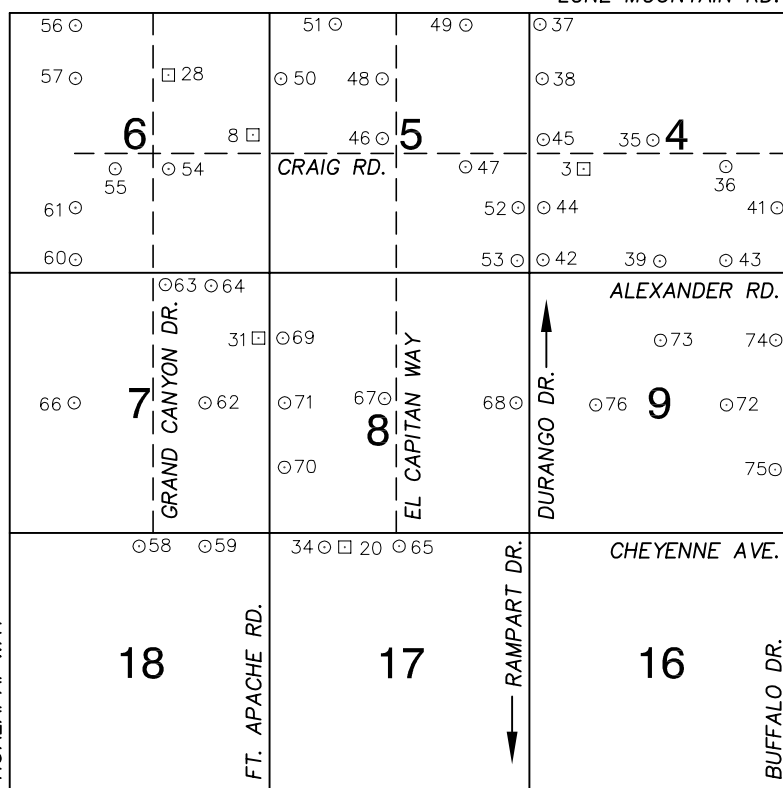
NORTH AMERICAN VERTICAL
DATUM OF 1988
— ALL ELEVATIONS IN METERS —

No.	STATION	ELEVATION (METERS)	DESCRIPTION	
1	1LV90 33NES	722.984	F N D	CITY OF LAS VEGAS PIN AND PLATE IN TOP OF CURB, SOUTH CURB LINE NEAR ANN RD. AND BUFFALO DR.
2	1LV90 33NNE6A	725.944	F N D	CITY OF LAS VEGAS PIN AND PLATE IN TOP OF CURB, SOUTHWEST CORNER OF ANN RD. AND PAINTED SUNRISE DR.
3	1LV90 33NNE6	727.961	F N D	CITY OF LAS VEGAS PIN AND PLATE IN TOP OF CURB, SOUTH CURB LINE OF ANN RD., ACROSS THE STREET FROM "BOGEY'S RESTAURANT."
4	1LV90 33N4	733.064	F N D	CITY OF LAS VEGAS PIN AND PLATE IN TOP OF CURB, SOUTHEAST CORNER OF ANN RD. AND CIMARRON RD. NEAR 1/2 DELTA.
5				LOST 2003
6				LOST 2003
7	1C90 29SSE6	755.144	F N D	RIVET AND SQUARE ALUMINUM PLATE IN THE SOUTH SIDE OF A ELECTRICAL PULL BOX, 143' EAST OF RILEY ST. ON THE NORTH SIDE OF ANN RD.
8	1C90 29S4	763.772	F N D	RIVET AND SQUARE ALUMINUM PLATE IN WEST TOP OF "A" TYPE CURB ON CUL-DE-SAC, 190' EAST OF EL CAPITAN WAY ON THE NORTH SIDE OF ANN RD.
9				LOST 2003
10				LOST 2003
11	1C90 31NNE6	794.538	F N D	RIVET AND SQUARE ALUMINUM PLATE IN AN ELECTRICAL N TRANSFORMER PAD (9443 ANN RD.) ON THE SOUTH SIDE OF ANN RD., 200' WEST OF TEE PEE LN.
CLARK COUNTY VERTICAL CONTROL v.2003				
CLARK COUNTY SURVEYOR'S OFFICE 5051 SOUTH PARADISE ROAD LAS VEGAS, NEVADA 89119 (702) 455-0640			CONVERSION FACTOR: METERS X $\left(\frac{3937}{1200}\right)$ = U.S. SURVEY FEET	
			REVISED 09/01/2006	SHEET 1 of 5 19-60 SW

No.	STATION	ELEVATION (METERS)	DESCRIPTION	No.	STATION	ELEVATION (METERS)	DESCRIPTION
12			LOST 2003	25	1C90 19SES	798.258	F N D RIVET AND SQUARE ALUMINUM PLATE IN A CONCRETE MONUMENT, 50' NORTH AND 40' WEST OF CENTENNIAL PKWY. AND FORT APACHE RD.
13			LOST 2003	26			LOST 2003
14			LOST 2003	27	1C90 30N4	819.470	F N D RIVET AND SQUARE ALUMINUM PLATE IN THE SOUTHEAST CORNER OF A ELECTRICAL CABINET BASE (#DD720), 200' SOUTH AND 40' WEST OF CENTENNIAL PKWY. AND GRAND CANYON DR.
15			LOST 2003	28	1C90 31SEE6	770.283	F N D RIVET AND SQUARE ALUMINUM PLATE IN EAST SIDE OF A CONCRETE ELECTRICAL PULLBOX BASE (#NN-563), AT 5025 APACHE RD., IN THE NORTHWEST CORNER OF FORT APACHE RD. AND LA MADRE WAY.
16	1C90 32SEE6	738.082	F N D RIVET AND SQUARE ALUMINUM PLATE IN A CONCRETE MONUMENT 4' NORTH OF POWER POLE (#68746NP), 60' NORTH AND 50' WEST OF DURANGO DR. AND LA MADRE WAY.	29			LOST 2003
17			LOST 2006	30			LOST 1992
18	1C90 29SEE6	750.626	F N D RIVET AND SQUARE ALUMINUM PLATE IN A CONCRETE MONUMENT, 50' SOUTH AND 50' WEST OF DURANGO DR. AND EL CAMPO GRANDE AVE.	31			LOST 2003
19			LOST 2003	32			LOST 2003
20			LOST 2003	33			LOST 2003
21			LOST 2003	34			LOST 2003
22			LOST 2003	35	1C90 31S6	791.203	F N D RIVET AND SQUARE ALUMINUM PLATE IN A CONCRETE MONUMENT, 130' NORTH AND 70' EAST OF GRAND CANYON DR. AND LA MADRE WAY, 5' WEST OF A 3.5' DIAMETER HIGH VOLTAGE POWER TRANSMISSION LINE.
23			LOST 2003	CLARK COUNTY VERTICAL CONTROL v.2003 CLARK COUNTY SURVEYOR'S OFFICE 5051 SOUTH PARADISE ROAD LAS VEGAS, NEVADA 89119 (702) 455-0640			
24			LOST 2003				
				CONVERSION FACTOR: METERS X $\left(\frac{3937}{1200}\right)$ = U.S. SURVEY FEET REVISED 09/01/2006			
				SHEET 2 OF 5		19-60 SW	

Township 20 South, Range 60 East Northwest Quarter

LONE MOUNTAIN RD.



NORTH AMERICAN VERTICAL
DATUM OF 1988
- ALL ELEVATIONS IN METERS -

No.	STATION	ELEVATION (METERS)	DESCRIPTION
1			LOST 2003
2			LOST 2003
3	1C00 4W6	726.792	FND RIVET AND SQUARE ALUMINUM PLATE IN AN ELECTRICAL TRANSFORMER PAD, 175' WEST OF AL GARRISON ST. ON THE SOUTH SIDE OF CRAIG RD.
4			LOST 2003
5			LOST 2003
6			LOST 2003
7			LOST 2003
8	1C00 6E4	759.465	FND RIVET AND SQUARE ALUMINUM PLATE IN SOUTHWEST CORNER OF AN ELECTRICAL TRANSFORMER PAD, 210' WEST OF FORT APACHE RD. AT 9245 CRAIG RD. ON THE NORTH SIDE OF CRAIG RD.
9			LOST 2003
10			LOST 2003
11			LOST 2003

CLARK COUNTY VERTICAL CONTROL v.2003

CLARK COUNTY SURVEYOR'S OFFICE
5051 SOUTH PARADISE ROAD
LAS VEGAS, NEVADA 89119
(702) 455-0640

CONVERSION FACTOR:
METERS X $\left(\frac{3937}{1200}\right)$ = U.S. SURVEY FEET

REVISED
09/01/2006

SHEET
1 OF 4

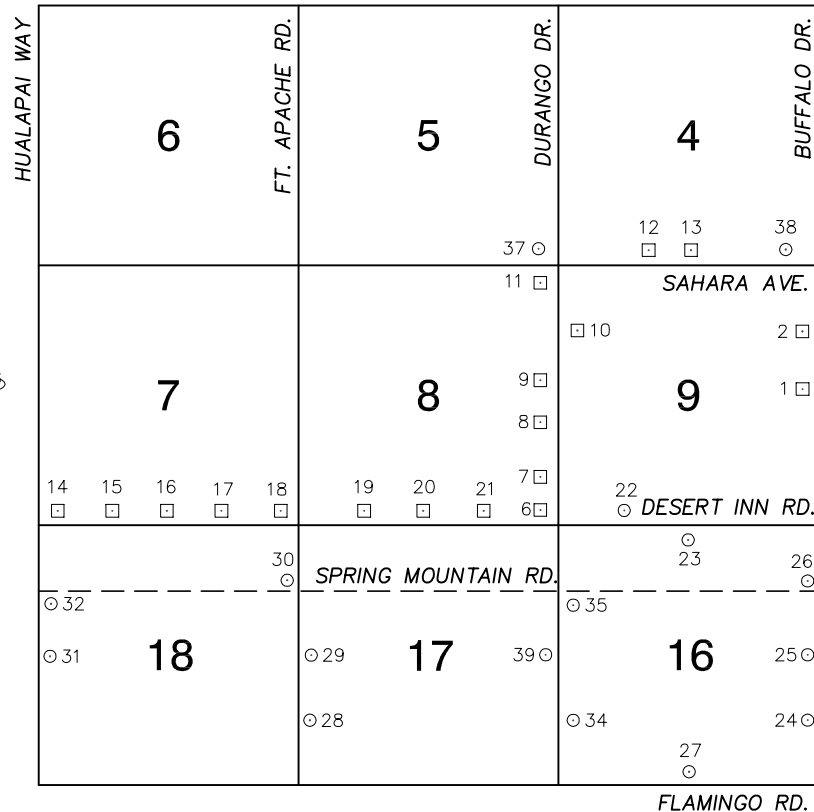
20-60
NW

No.	STATION	ELEVATION (METERS)	DESCRIPTION		No.	STATION	ELEVATION (METERS)	DESCRIPTION			
36	8LV00 4E6	718.083	F N D	CITY OF LAS VEGAS RIVET AND ALUMINUM PLATE IN CONCRETE CYLINDER, SOUTHEAST CORNER OF CRAIG RD. AND CONOUGH LN. ±75' EAST OF CONOUGH LN.	49	8LV00 5NNE6	740.461	F N D	CITY OF LAS VEGAS RIVET AND ALUMINUM PLATE IN TOP OF CURB, SOUTHWEST CORNER OF LONE MOUNTAIN RD. AND RILEY ST. NEAR THE PT OF RILEY ST.		
37	8LV00 4NWS	734.125	F N D	CITY OF LAS VEGAS RIVET AND ALUMINUM PLATE IN TOP OF CURB, SOUTHEAST CORNER OF LONE MOUNTAIN RD. AND DURANGO DR. NEAR THE PT OF LONE MOUNTAIN RD.	50	6LV00 5NWW6	759.031	F N D	BLM BRASS CAP IN WELL, FORT APACHE RD. AND RED COACH AVE. ALIGNMENT.		
38	0LV00 4NWW6	731.271	F N D	CITY OF LAS VEGAS RIVET AND ALUMINUM PLATE IN TOP OF CURB, NORTHEAST CORNER OF DURANGO DR. AND RED COACH AVE. NEAR THE PT OF DURANGO DR.	51	8LV00 5NNW6	754.749	F N D	CITY OF LAS VEGAS RIVET AND ALUMINUM PLATE IN CONCRETE PAD, SOUTHEAST CORNER OF LONE MOUNTAIN RD. AND CAMPBELL RD. ±100' EAST OF CAMPBELL RD.		
39	6LV00 4S4	722.298	F N D	CITY OF LAS VEGAS RIVET AND ALUMINUM PLATE IN TOP OF CURB, NORTHEAST CORNER OF ALEXANDER RD. AND CIMARRON RD. NEAR THE PC OF ALEXANDER RD.	52	0LV00 5SEE6	730.541	F N D	CITY OF LAS VEGAS RIVET AND ALUMINUM PLATE IN TOP OF CURB, WEST SIDE OF ISLAND AT DURANGO DR. ±320' NORTH OF FLORINE AVE.		
40				LOST 2006	53	0LV00 5SES	732.411	F N D	CITY OF LAS VEGAS RIVET AND ALUMINUM PLATE IN TOP OF CURB, NORTHWEST CORNER OF ALEXANDER RD. AND DURANGO DR. NEAR 1/2 DELTA.		
41	1LV00 4SEE6	714.789	F N D	CITY OF LAS VEGAS RIVET AND ALUMINUM PLATE IN TOP OF CURB, SOUTHWEST CORNER OF BUFFALO DR. AND HICKAM AVE. NEAR 1/2 DELTA.	54	8LV00 6C4	779.976	F N D	CITY OF LAS VEGAS RIVET AND ALUMINUM PLATE IN CONCRETE PAD, SOUTHEAST CORNER OF CRAIG RD. AND GRAND CANYON DR. ±50' SOUTH OF CRAIG RD.		
42	1LV00 4SES	713.808	F N D	CITY OF LAS VEGAS RIVET AND ALUMINUM PLATE IN TOP OF CURB, NORTHWEST CORNER OF BUFFALO DR. AND ALEXANDER RD. NEAR 1/2 DELTA.	55	8LV00 6C4W	787.369	F N D	CITY OF LAS VEGAS RIVET AND ALUMINUM PLATE IN TOP OF CURB, SOUTHEAST CORNER OF CRAIG RD. AND JENSEN ST. NEAR THE PC OF JENSEN ST.		
43	6LV00 4SSE6	718.315	F N D	CITY OF LAS VEGAS RIVET AND ALUMINUM PLATE IN TOP OF CURB, NORTHWEST CORNER OF ALEXANDER RD. AND POPPY FIELDS DR. NEAR THE PT OF ALEXANDER RD.	56	8LV00 6NNW6	808.394	F N D	CITY OF LAS VEGAS RIVET AND ALUMINUM PLATE IN CONCRETE CYLINDER, SOUTHWEST CORNER OF LONE MOUNTAIN RD. AND CONQUISTADOR ST.		
44	0LV00 4SWW6	730.026	F N D	BRASS CAP "PLS 7008" AT DURANGO DR. AND HICKAM AVE. ALIGNMENT.	57	8LV00 6NW6	804.439	F N D	CITY OF LAS VEGAS RIVET AND ALUMINUM PLATE IN CONCRETE PAD, SOUTHEAST CORNER OF CONQUISTADOR ST. AND RED COACH AVE.		
45	8LV00 4W4	729.980	F N D	CITY OF LAS VEGAS RIVET AND ALUMINUM PLATE IN TOP OF CURB, NORTHEAST CORNER OF CRAIG RD. AND DURANGO DR. NEAR THE PC OF CRAIG RD.	58	6LV00 18N4	805.793	F N D	CITY OF LAS VEGAS RIVET AND ALUMINUM PLATE IN TOP OF CURB, SOUTH SIDE OF CHEYENNE AVE. OPPOSITE GRAND CANYON DR.		
46	8LV00 5C4	742.448	F N D	CITY OF LAS VEGAS RIVET AND ALUMINUM PLATE IN CONCRETE PAD, NORTH SIDE OF CRAIG RD. ±30' WEST OF EL CAPITAN WAY.	59	8LV00 18NNE6	790.161	F N D	CITY OF LAS VEGAS RIVET AND ALUMINUM PLATE IN TOP OF CURB, SOUTH SIDE OF CHEYENNE AVE. ±100' EAST AND OPPOSITE OF MOUNTAIN VIEW LUTHERAN CHURCH.		
47	8LV00 5E6	735.924	F N D	CITY OF LAS VEGAS RIVET AND ALUMINUM PLATE IN CONCRETE CYLINDER, SOUTHEAST CORNER OF CRAIG RD. AND RILEY ST. NEAR 1/2 DELTA OF 6' WALL.	CLARK COUNTY VERTICAL CONTROL v.2003 CLARK COUNTY SURVEYOR'S OFFICE 5051 SOUTH PARADISE ROAD LAS VEGAS, NEVADA 89119 (702) 455-0640						
48	8LV00 5N6	743.134	F N D	CITY OF LAS VEGAS RIVET AND ALUMINUM PLATE IN CONCRETE CYLINDER, NORTHWEST CORNER OF EL CAPITAN WAY AND RED COACH AVE.							
					CONVERSION FACTOR: METERS X $\left(\frac{3937}{1200}\right)$ = U.S. SURVEY FEET		REVISED 09/01/2006		SHEET 3 OF 4	20-60 NW	

No.	STATION	ELEVATION (METERS)	DESCRIPTION		No.	STATION	ELEVATION (METERS)	DESCRIPTION						
12	7C02 27SWS	535.942	F N D	BRASS CAP REFERENCE MONUMENT IN TOP OF CURB NORTHEAST CORNER OF BONANZA RD. AND SLOAN LN. NEAR THE PC OF BONANZA RD.	25	4C02 27SWW6	537.934	F N D	RIVET AND SQUARE ALUMINUM PLATE IN TOP OF CURB EAST SIDE OF SLOAN LN. 75' SOUTH OF HALEHAVEN DR.					
13	3C02 34SWS	527.388	F N D	RIVET AND SQUARE ALUMINUM PLATE IN TOP OF CURB NORTHEAST CORNER OF DROP INLET AT CHARLESTON BLVD. AND THE SLOAN CHANNEL.	26	0C02 27NWW6 2000	541.694	S E T	RIVET AND ROUND ALUMINUM PLATE IN TOP OF CURB EAST SIDE OF SLOAN LN. 18' NORTH OF HONEYGROVE AVE.					
14	7C02 34SSW6 1997	527.728	S E T	RIVET AND ROUND ALUMINUM PLATE IN TOP OF CURB NORTHWEST CORNER OF CHARLESTON BLVD. AND BEESLEY ST. NEAR THE PC OF CHARLESTON BLVD.	27	0C02 27SSE6 2000	553.851	S E T	RIVET AND ROUND ALUMINUM PLATE IN TOP OF CURB NORTHEAST CORNER OF BONANZA RD. AND SPANISH DR. NEAR THE PC OF BONANZA RD.					
15	3C02 34S4	531.776	F N D	RIVET AND SQUARE ALUMINUM PLATE IN TOP OF CURB NORTHEAST CORNER OF CHARLESTON BLVD. AND FOGG ST. NEAR THE PC OF CHARLESTON BLVD.	28	4C02 22N4	562.014	S E T	RIVET AND SQUARE ALUMINUM PLATE IN TOP OF CURB SOUTHWEST CORNER OF CAREY AVE. AND MT. HOOD ST. NEAR THE PC OF CAREY AVE.					
16	7C02 34SSE6 1997	538.821	S E T	RIVET AND ROUND ALUMINUM PLATE IN TOP OF CURB NORTHEAST CORNER OF CHARLESTON BLVD. AND SPANISH DR. NEAR THE PC OF CHARLESTON BLVD.	29	4C02 22NWW6	547.595	F N D	RIVET AND SQUARE ALUMINUM PLATE IN TOP OF CURB NORTHEAST CORNER OF JUDSON AVE. AND SLOAN LN. NEAR THE PC OF JUDSON AVE.					
17	3C02 35SWS	548.834	F N D	RIVET AND SQUARE ALUMINUM PLATE IN TOP OF CURB NORTHEAST CORNER OF CHARLESTON BLVD. AND HOLLYWOOD BLVD. NEAR THE PC OF HOLLYWOOD BLVD.	30	7C02 26NWW6	577.837	F N D	RIVET AND ROUND ALUMINUM PLATE IN TOP OF CURB SOUTHEAST CORNER OF HOLLYWOOD BLVD. AND MONROE ST. NEAR FIRE HYDRANT.					
18	3C02 35SWW6	552.007	F N D	RIVET AND SQUARE ALUMINUM PLATE IN TOP OF CURB SOUTHEAST CORNER OF HOLLYWOOD BLVD. AND SUNRISE AVE. 12' SOUTH OF A CULVERT.	31									
19	3C02 34E4	555.493	F N D	RIVET AND SQUARE ALUMINUM PLATE IN TOP OF CURB SOUTHWEST CORNER OF HOLLYWOOD BLVD. AND STEWART AVE. NEAR THE PC OF HOLLYWOOD BLVD.	32									
20	1C02 23SWW6	586.271	F N D	RIVET AND SQUARE ALUMINUM PLATE IN TOP OF CURB NORTHEAST CORNER OF HOLLYWOOD BLVD. AND CHERRY GROVE AVE. NEAR THE PC OF HOLLYWOOD BLVD.	33									
21				LOST 2003	34									
22	4C02 22E6	572.338	F N D	RIVET AND SQUARE ALUMINUM PLATE IN TOP OF CURB SOUTHWEST CORNER OF LAKE MEAD BLVD. AND SHATZ ST. NEAR THE PC OF LAKE MEAD BLVD.	35									
23	4C02 22C4	559.149	F N D	RIVET AND SQUARE ALUMINUM PLATE IN TOP OF CURB SOUTHWEST CORNER OF LAKE MEAD BLVD. AND MT. HOOD ST. NEAR THE PC OF LAKE MEAD BLVD.	CLARK COUNTY VERTICAL CONTROL v.2003 CLARK COUNTY SURVEYOR'S OFFICE 5051 SOUTH PARADISE ROAD LAS VEGAS, NEVADA 89119 (702) 455-0640							CONVERSION FACTOR: METERS X $\left(\frac{3937}{1200}\right)$ = U.S. SURVEY FEET		
24	4C02 22W6	550.667	F N D	RIVET AND SQUARE ALUMINUM PLATE IN TOP OF CURB SOUTHWEST CORNER OF LAKE MEAD BLVD. AND BEESLEY DR. NEAR THE PC OF LAKE MEAD BLVD.								REVISED 09/01/2006		SHEET 2 OF 2

Township 21 South, Range 60 East Northwest Quarter

CHARLESTON BLVD.



NORTH AMERICAN VERTICAL
DATUM OF 1988
- ALL ELEVATIONS IN METERS -

No.	STATION	ELEVATION (METERS)	DESCRIPTION
1	7C10 9E4	767.551	F N D RIVET AND SQUARE ALUMINUM PLATE IN TOP OF CURB, NORTH CURB LINE OF CUL-DE-SAC, 250' NORTH OF EDNA AVE. WEST SIDE OF BUFFALO DR., ACTUAL STAMPED "7C10 9NE4".
2	7C10 9NEE6	768.240	F N D RIVET AND SQUARE ALUMINUM PLATE IN TOP OF CURB, SOUTHWEST CORNER OF BUFFALO DR. AND ELDORA AVE. NEAR THE PC OF BUFFALO DR.
3			LOST 2003
4			LOST 2003
5			LOST 2003
6	1LV10 8SWS	797.924	F N D CITY OF LAS VEGAS PIN AND PLATE IN TOP OF CURB, NORTHWEST CORNER OF DURANGO DR. AND DESERT INN RD. NEAR THE PC OF DURANGO DR.
7	1LV10 8SEE6	801.908	F N D CITY OF LAS VEGAS PIN AND PLATE IN TOP OF CURB, WEST SIDE OF DURANGO DR. AND 900' NORTH OF DESERT INN RD.
8	1LV10 8E4A	805.302	F N D CITY OF LAS VEGAS PIN AND PLATE IN TOP OF CURB, SOUTHWEST CORNER OF DURANGO DR. AND PADDLE WHEEL WAY NEAR THE PC OF DURANGO.
9	1LV10 8E4	808.630	F N D CITY OF LAS VEGAS PIN AND PLATE IN TOP OF CURB, NORTHWEST CORNER OF DURANGO DR. AND STARBOARD DR. NEAR THE PC OF DURANGO DR.
10	2C10 9NWW6	809.842	F N D RIVET AND SQUARE ALUMINUM PLATE IN TOP OF CURB, NORTHEAST CORNER OF DURANGO DR. AND ELDORA ST. NEAR THE PC OF DURANGO DR.
11	2C10 8NES	811.591	F N D RIVET AND SQUARE ALUMINUM PLATE IN TOP OF CURB, SOUTHWEST CORNER OF DURANGO DR. AND SAHARA AVE. NEAR THE PC OF DURANGO DR.

CLARK COUNTY VERTICAL CONTROL v.2003

CLARK COUNTY SURVEYOR'S OFFICE
5051 SOUTH PARADISE ROAD
LAS VEGAS, NEVADA 89119
(702) 455-0640

CONVERSION FACTOR:
METERS X $\left(\frac{3937}{1200}\right)$ = U.S. SURVEY FEET

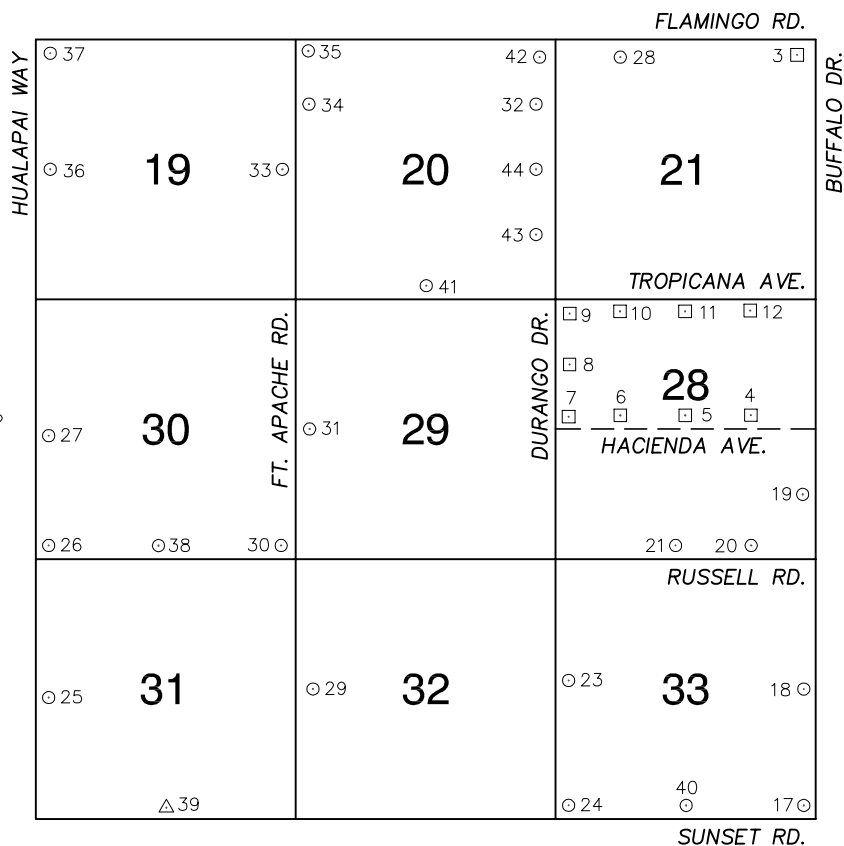
REVISED
09/01/2006

SHEET
1 OF 3

21-60
NW

No.	STATION	ELEVATION (METERS)	DESCRIPTION	No.	STATION	ELEVATION (METERS)	DESCRIPTION
12	1LV10 4SSW6	795.831	F N D CITY OF LAS VEGAS PIN AND PLATE IN TOP OF CURB, NORTH SIDE OF SAHARA AVE. NEAR THE ALIGNMENT OF TOMSIK ST.	25	8C10 16E4 1998	753.274	S E T RIVET AND ROUND ALUMINUM PLATE IN TOP OF CURB, NORTHWEST CORNER OF BUFFALO DR. AND TWAIN AVE. NEAR THE PC OF BUFFALO DR.
13	1LV10 4S4	784.688	F N D CITY OF LAS VEGAS PIN AND PLATE IN TOP OF CURB, NORTH SIDE OF SAHARA AVE. NEAR CIMARRON RD. 600' EAST OF CIMARRON RD.	26	8C10 16NEE6 1998	756.133	S E T RIVET AND ROUND ALUMINUM PLATE IN TOP OF CURB, NORTHWEST CORNER OF BUFFALO DR. AND SPRING MOUNTAIN RD. NEAR THE PC OF BUFFALO DR.
14	1LV10 7SWS	859.957	F N D CITY OF LAS VEGAS PIN AND PLATE IN TOP OF CURB, NORTHEAST CORNER OF HUALAPAI WAY. AND DESERT INN RD. NEAR 1/2 DELTA.	27	8C10 16S4 1998	761.789	S E T RIVET AND ROUND ALUMINUM PLATE IN TOP OF CURB, NORTHEAST CORNER OF FLAMINGO RD. AND CIMARRON RD. NEAR THE PC OF FLAMINGO RD.
15	1LV10 7SSW6	852.045	F N D CITY OF LAS VEGAS PIN AND PLATE IN TOP OF CURB, NORTH SIDE OF DESERT INN RD. 200' WEST OF MOUNTAIN BLUE BIRD ST.	28	8C10 17SWW6 1998	812.077	S E T RIVET AND ROUND ALUMINUM PLATE IN TOP OF CURB, SOUTHEAST CORNER OF FORT APACHE RD. AND VIKING RD. NEAR THE PC OF FORT APACHE RD.
16	1LV10 7S4	845.042	F N D CITY OF LAS VEGAS PIN AND PLATE IN TOP OF CURB, NORTHWEST CORNER OF DESERT INN RD. AND GRAND CANYON DR. NEAR 1/2 DELTA.	29	8C10 17W4 1998	816.716	S E T RIVET AND ROUND ALUMINUM PLATE IN TOP OF CURB, SOUTHEAST CORNER OF FORT APACHE RD. AND TWAIN AVE. NEAR THE PC OF FORT APACHE RD.
17	1LV10 7SSE6	839.753	F N D CITY OF LAS VEGAS PIN AND PLATE IN TOP OF CURB, NORTHWEST CORNER OF DESERT INN RD. AND SURFLINE DR. NEAR 1/2 DELTA.	30	8C10 18NEE6 1998	825.620	S E T RIVET AND ROUND ALUMINUM PLATE IN TOP OF CURB, NORTHWEST CORNER OF FORT APACHE RD. AND SPRING MOUNTAIN RD. NEAR THE PC OF FORT APACHE RD.
18	1LV10 7SES	832.233	F N D CITY OF LAS VEGAS PIN AND PLATE IN TOP OF CURB, NORTHWEST CORNER OF DESERT INN RD. AND FORT APACHE RD. NEAR 1/2 DELTA.	31	8C10 18W4 1998	848.870	S E T RIVET AND ROUND ALUMINUM PLATE IN TOP OF CURB, NORTHEAST CORNER OF HUALAPAI WAY. AND TWAIN AVE. NEAR THE PC OF HUALAPAI WAY.
19	1LV10 8SSW6	823.602	F N D CITY OF LAS VEGAS PIN AND PLATE IN TOP OF CURB, NORTHWEST CORNER OF DESERT INN RD. AND HIDDEN CANYON LN. NEAR 1/2 DELTA.	32	8C10 18NWW6 1998	854.110	S E T RIVET AND ROUND ALUMINUM PLATE IN TOP OF CURB, SOUTHEAST CORNER OF HUALAPAI WAY. AND SPRING MOUNTAIN RD. NEAR THE PC OF HUALAPAI WAY.
20	1LV10 8S4	816.844	F N D CITY OF LAS VEGAS PIN AND PLATE IN TOP OF CURB, NORTHWEST CORNER OF DESERT INN RD. AND CRYSTAL WATER WAY NEAR 1/2 DELTA.	33			LOST 2006
21	1LV10 8SSE6	807.871	F N D CITY OF LAS VEGAS PIN AND PLATE IN TOP OF CURB, NORTHWEST CORNER OF DESERT INN RD. AND MARINER BAY NEAR 1/2 DELTA.	34	8C10 16SWW6 1998	781.920	S E T RIVET AND ROUND ALUMINUM PLATE IN THE CONCRETE BASE OF A LVVWD VENT PIPE, SOUTHEAST QUADRANT OF DURANGO DR. AND VIKING RD.
22	0C10 9SSW6 2000	788.584	S E T RIVET AND ROUND ALUMINUM PLATE IN TOP OF CURB, NORTH SIDE OF DESERT INN RD. NEAR THE ALIGNMENT OF GAGNIER AVE. 3' EAST OF END OF CONCRETE.	35	8C10 16NWW6 1998	792.696	S E T RIVET AND ROUND ALUMINUM PLATE IN TOP OF CURB, SOUTHEAST CORNER OF DURANGO DR. AND SPRING MOUNTAIN RD. 50' SOUTH OF THE PC OF DURANGO DR.
23	8C10 16N4 1998	779.148	S E T RIVET AND ROUND ALUMINUM PLATE IN TOP OF CURB, SOUTHEAST CORNER OF DESERT INN RD. AND CIMARRON RD. NEAR THE PC OF CIMARRON RD.	CLARK COUNTY VERTICAL CONTROL v.2003 CLARK COUNTY SURVEYOR'S OFFICE 5051 SOUTH PARADISE ROAD LAS VEGAS, NEVADA 89119 (702) 455-0640			
24	8C10 16SEE6 1998	749.347	S E T RIVET AND ROUND ALUMINUM PLATE IN TOP OF CURB, SOUTHWEST CORNER OF BUFFALO DR. AND VIKING RD. NEAR THE PC OF BUFFALO DR.				
				CONVERSION FACTOR: METERS X $\left(\frac{3937}{1200}\right)$ = U.S. SURVEY FEET REVISED 09/01/2006			
				SHEET 2 OF 3 21-60 NW			

Township 21 South, Range 60 East Southwest Quarter

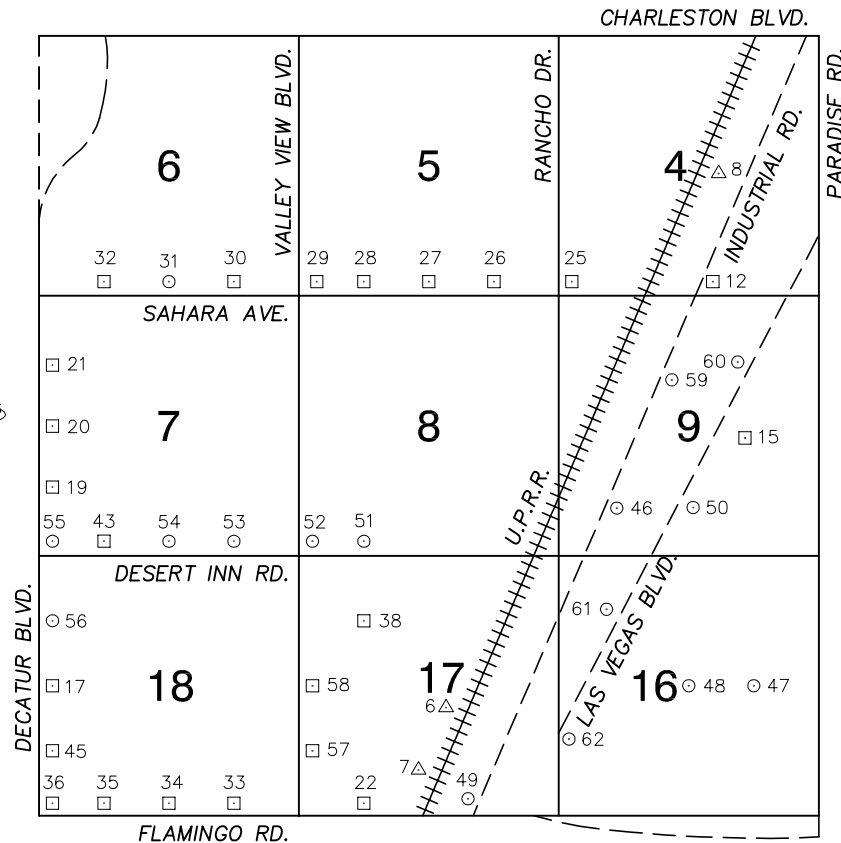


NORTH AMERICAN VERTICAL
DATUM OF 1988
- ALL ELEVATIONS IN METERS -

No.	STATION	ELEVATION (METERS)	DESCRIPTION
1			LOST 2003
2			LOST 2003
3	7C10 21NES	747.152	F N D RIVET AND SQUARE ALUMINUM PLATE IN CONCRETE FOUNDATION OF ELECTRICAL CABINET, SOUTHWEST CORNER OF BUFFALO DR. AND FLAMINGO RD.
4	2C10 28E6	741.766	F N D RIVET AND SQUARE ALUMINUM PLATE IN TOP OF CURB, NORTH SIDE OF HACIENDA AVE. 0.25 MILES WEST OF BUFFALO DR.
5	2C10 28C4	746.991	F N D RIVET AND SQUARE ALUMINUM PLATE IN TOP OF CURB, NORTH SIDE OF HACIENDA AVE. AT CIMARRON RD.
6	2C10 28W6	752.816	F N D RIVET AND SQUARE ALUMINUM PLATE IN TOP OF CURB, NORTH SIDE OF HACIENDA AVE. 0.26 MILES EAST OF DURANGO DR.
7	2C10 28W4	759.744	F N D RIVET AND SQUARE ALUMINUM PLATE IN TOP OF CURB, NORTHEAST CORNER OF HACIENDA AVE. AND DURANGO DR. AT 1/2 DELTA.
8	2C10 28NWW6	763.305	F N D RIVET AND SQUARE ALUMINUM PLATE IN TOP OF CURB, EAST SIDE OF DURANGO DR. NEAR RENO AVE.
9	2C10 28NWS	765.607	F N D RIVET AND SQUARE ALUMINUM PLATE IN TOP OF CURB, SOUTH SIDE OF TROPICANA AVE. AND 200' EAST OF DURANGO DR.
10	2C10 28NNW6	759.357	F N D RIVET AND SQUARE ALUMINUM PLATE IN TOP OF CURB, SOUTH SIDE OF TROPICANA AVE AND 0.25 MILES EAST OF DURANGO DR.
11	2C10 28N4	752.145	F N D RIVET AND SQUARE ALUMINUM PLATE IN TOP OF CURB, SOUTH SIDE OF TROPICANA AVE. NEAR CIMARRON RD. ALIGNMENT.
CLARK COUNTY VERTICAL CONTROL v.2003			
CLARK COUNTY SURVEYOR'S OFFICE 5051 SOUTH PARADISE ROAD LAS VEGAS, NEVADA 89119 (702) 455-0640			CONVERSION FACTOR: METERS X $\left(\frac{3937}{1200}\right)$ = U.S. SURVEY FEET
REVISED 09/01/2006		SHEET 1 OF 3	21-60 SW

No.	STATION	ELEVATION (METERS)	DESCRIPTION		No.	STATION	ELEVATION (METERS)	DESCRIPTION				
12	2C10 28NNE6	744.840	F N D	RIVET AND SQUARE ALUMINUM PLATE IN TOP OF CURB, SOUTH SIDE OF TROPICANA AVE. AND 0.25 MILES WEST OF BUFFALO DR.	25	8C10 31W4 1998	813.443	S E T	RIVET AND ROUND ALUMINUM PLATE IN A LVVWD (AIR-VAC) VENT CONCRETE PAD, IN THE SOUTHEAST QUADRANT OF HUALAPAI WAY AND PATRICK LN. 135' SOUTH AND 48' EAST OF THE INTERSECTION.			
13				LOST 2003	26	8C10 30SWS 1998	819.445	S E T	RIVET AND ROUND ALUMINUM PLATE IN A CONCRETE MONUMENT, NORTHEAST QUADRANT OF HUALAPAI WAY AND RUSSELL RD. 135' EAST AND 66 NORTH OF THE INTERSECTION.			
14				LOST 2003	27	8C10 30W4 1998	834.032	S E T	RIVET AND ROUND ALUMINUM PLATE IN A CONCRETE MONUMENT, SOUTHEAST QUADRANT OF HUALAPAI WAY AND HACIENDA AVE. 83' SOUTH AND 101' EAST OF THE INTERSECTION.			
15				LOST 2003	28	8C10 21NNW6 1998	770.630	S E T	RIVET AND ROUND ALUMINUM PLATE IN TOP OF CURB, SOUTHWEST CORNER OF FLAMINGO RD. AND GAGNIER BLVD. NEAR THE PC OF FLAMINGO RD.			
16				LOST 2003	29	8C10 32W4 1998	782.600	S E T	RIVET AND ROUND ALUMINUM PLATE IN A CONCRETE MONUMENT, NORTHEAST CORNER OF FORT APACHE RD. AND PATRICK LN.			
17	8C10 33SES 1998	767.458	S E T	RIVET AND ROUND ALUMINUM PLATE IN A LVVWD (AIR-VAC) VENT CONCRETE PAD, IN THE NORTHWEST QUADRANT OF BUFFALO DR. AND SUNSET RD. 46' WEST AND 134' NORTH OF THE INTERSECTION.	30	8C10 30SES 1998	790.636	S E T	RIVET AND ROUND ALUMINUM PLATE IN A CONCRETE MONUMENT, NORTHWEST CORNER OF FORT APACHE RD. AND RUSSELL RD. 47' NORTH AND 110' WEST			
18	8C10 33E4 1998	757.773	S E T	RIVET AND ROUND ALUMINUM PLATE IN A CONCRETE MONUMENT, NORTHWEST QUADRANT OF PATRICK LN. AND BUFFALO DR. 57' WEST AND 43' NORTH OF THE INTERSECTION.	31	8C10 29W4 1998	795.269	S E T	RIVET AND ROUND ALUMINUM PLATE IN A CONCRETE MONUMENT, SOUTHEAST CORNER OF FORT APACHE RD. AND HACIENDA AVE.			
19	8C10 28SEE6 1998	741.693	S E T	RIVET AND ROUND ALUMINUM PLATE IN TOP OF CURB, NORTHWEST CORNER OF BUFFALO DR. AND DIABLO DR. NEAR THE PC OF BUFFALO DR.	32	0C10 20NEE6 2000	775.616	S E T	RIVET AND ROUND ALUMINUM PLATE IN TOP OF CURB, SOUTHWEST CORNER OF DURANGO DR. AND ROCHELLE AVE. NEAR THE PC OF DURANGO DR.			
20	8C10 28SSE6 1998	750.084	S E T	RIVET AND ROUND ALUMINUM PLATE IN TOP OF CURB, NORTH SIDE OF RUSSELL RD. NEAR THE ALIGNMENT OF WARBONNET WAY.	33	8C10 19E4 1998	800.514	S E T	RIVET AND ROUND ALUMINUM PLATE IN A CONCRETE ELECTRICAL VAULT, SOUTHWEST CORNER OF FORT APACHE RD. AND PEACE WAY.			
21	8C10 28S4 1998	753.149	S E T	RIVET AND ROUND ALUMINUM PLATE IN THE SOUTHEAST CORNER OF A CONCRETE ELECTRICAL VAULT 13' X 34' NORTH OF RUSSELL RD. 290' WEST OF E.O. AND 100' EAST OF THE EAST SLOPE OF THE DETENTION BASIN.	34	8C10 20NWW6 1998	803.657	S E T	RIVET AND ROUND ALUMINUM PLATE IN TOP OF CURB, NORTHEAST CORNER OF FORT APACHE RD. AND ROCHELLE AVE. NEAR THE PC OF FORT APACHE RD.			
22				LOST 2006	35	8C10 20NWS 1998	807.055	S E T	RIVET AND ROUND ALUMINUM PLATE IN A CONCRETE ELECTRICAL VAULT, SOUTHEAST CORNER OF FORT APACHE RD. AND FLAMINGO RD. 190' EAST OF FORT APACHE RD.			
23	8C10 33W4 1998	769.022	S E T	RIVET AND ROUND ALUMINUM PLATE IN THE SOUTHWEST CORNER OF A CONCRETE ELECTRICAL VAULT 13' X 34' 30' EAST OF THE EO OF DURANGO DR. AND 100' NORTH OF THE ALIGNMENT OF PATRICK LN.	CLARK COUNTY VERTICAL CONTROL v.2003 CLARK COUNTY SURVEYOR'S OFFICE 5051 SOUTH PARADISE ROAD LAS VEGAS, NEVADA 89119 (702) 455-0640							
24	8C10 33SWS 1998	781.751	S E T	RIVET AND ROUND ALUMINUM PLATE IN A CONCRETE ELECTRICAL VAULT, NORTHEAST QUADRANT OF SUNSET RD. AND DURANGO DR.								
								CONVERSION FACTOR: METERS X $\left(\frac{3937}{1200}\right)$ = U.S. SURVEY FEET				
								REVISED 09/01/2006		SHEET 2 OF 3		21-60 SW

Township 21 South, Range 61 East Northwest Quarter



NORTH AMERICAN VERTICAL
DATUM OF 1988
- ALL ELEVATIONS IN METERS -

No.	STATION	ELEVATION (METERS)	DESCRIPTION
1			LOST 2003
2			LOST 2003
3			LOST 2003
4			LOST 2003
5			LOST 2003
6	W 399 1980	648.204	F N D USC&GS BRASS CAP SET VERTICALLY IN EAST FACE OF SOUTH SUPPORT PILLAR OF SOUTH BOUND I-15 OVERPASS AT RAILROAD TRACKS, FIRST COLUMN WEST OF TRACKS.
7	N 366 1963	653.516	F N D USC&GS BRASS CAP IN SOUTHEAST HEADWALL OF RAILROAD BRIDGE, 325' NORTH OF FLAMINGO RD. OVERPASS AT TRACKS.
8	K 366 1963	623.990	F N D USC&GS BRASS CAP IN NORTHEAST CORNER OF OAKY BLVD.-WYOMING AVE. AND U.P.R.R. TRACKS, IN TOP OF WEST END OF RETAINING WALL.
9			LOST 2003
10			LOST 2003
11			LOST 2003

CLARK COUNTY VERTICAL CONTROL v.2003

CLARK COUNTY SURVEYOR'S OFFICE
5051 SOUTH PARADISE ROAD
LAS VEGAS, NEVADA 89119
(702) 455-0640

CONVERSION FACTOR:
METERS X $\left(\frac{3937}{1200}\right)$ = U.S. SURVEY FEET

REVISED
09/01/2006

SHEET
1 OF 4

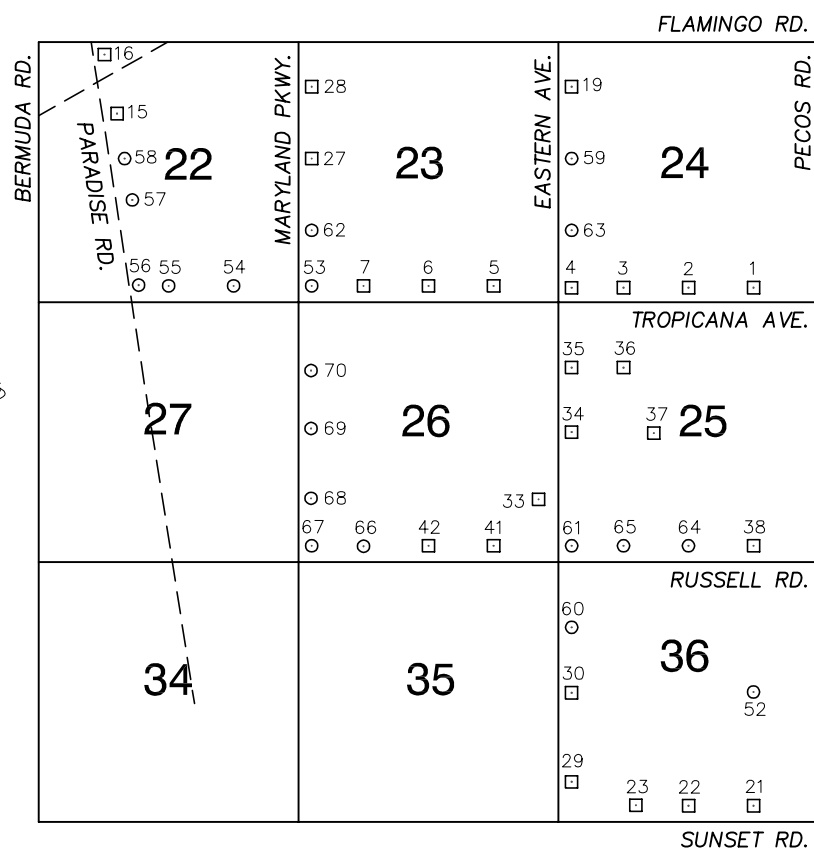
21-61
NW

No.	STATION	ELEVATION (METERS)	DESCRIPTION	No.	STATION	ELEVATION (METERS)	DESCRIPTION
12	6C11 4S4	626.252	F RIVET AND SQUARE ALUMINUM PLATE IN TOP OF CURB, N EAST SIDE OF INDUSTRIAL RD. JUST NORTH OF SAHARA D AVE. OVERPASS NEAR THE PC OF NORTH BRIDGE ST.	25	7C11 4SWS	632.656	F RIVET AND SQUARE ALUMINUM PLATE IN TOP OF CURB, N NORTHEAST CORNER OF SAHARA AVE. AND RANCHO DR. D NEAR THE PC OF SAHARA AVE.
13			LOST 2003	26	7C11 5SSE6	636.825	F RIVET AND SQUARE ALUMINUM PLATE IN TOP OF CURB, N NORTHEAST CORNER OF SAHARA AVE. AND PASEO DEL D PRADO—TEDDY DR. NEAR THE PC OF SAHARA AVE.
14			LOST 2003	27	7C11 5S4	640.447	F RIVET AND SQUARE ALUMINUM PLATE IN TOP OF CURB, N NORTHEAST CORNER OF SAHARA AVE. AND RICHFIELD D BLVD. NEAR THE PC OF SAHARA AVE.
15	6C11 9E6	627.908	F RIVET AND SQUARE ALUMINUM PLATE IN A TRAFFIC N SIGNAL POLE BASE, SOUTHEAST CORNER OF RIVIERA D BLVD. AND LAS VEGAS BLVD.	28	7C11 5SSW6	649.768	F RIVET AND SQUARE ALUMINUM PLATE IN TOP OF CURB, N NORTHEAST CORNER OF SAHARA AVE. AND RYE ST. — D SPANISH OAKS DR. NEAR THE PC OF SAHARA AVE.
16			LOST 2003	29	7C11 5SWS	657.619	F RIVET AND SQUARE ALUMINUM PLATE IN TOP OF CURB, N NORTHEAST CORNER OF SAHARA AVE. AND VALLEY VIEW D BLVD. NEAR THE PC OF SAHARA AVE.
17	7C11 18W4	676.537	F RIVET AND SQUARE ALUMINUM PLATE IN TOP OF CURB, N NORTHEAST CORNER OF DECATUR BLVD. AND TWAIN AVE. D NEAR THE PC OF DECATUR BLVD.	30	7C11 6SSE6	660.636	F RIVET AND SQUARE ALUMINUM PLATE IN TOP OF CURB, N NORTHEAST CORNER OF SAHARA AVE. AND ARENAS ST. D NEAR THE PC OF SAHARA AVE.
18			LOST 2003	31	7C11 6S4	665.299	F NDOT BRASS CAP IN TOP OF CURB, NORTHWEST N CORNER OF SAHARA AVE. AND ARVILLE ST. NEAR THE D PC OF SAHARA AVE.
19	7C11 7SWW6	674.393	F RIVET AND SQUARE ALUMINUM PLATE IN TOP OF CURB, N NORTHEAST CORNER OF DECATUR BLVD. AND SIRIUS D AVE. NEAR THE PC OF DECATUR BLVD.	32	2LV11 6SSW6	669.693	F CITY OF LAS VEGAS PIN AND PLATE IN TOP OF CURB, N NORTH SIDE OF SAHARA AVE. AT DECATUR PLAZA, D NEAR 4601 SAHARA AVE.
20	CLV 1617B14	676.560	F CITY OF LAS VEGAS PIN AND PLATE IN TOP OF CURB, N NORTHEAST CORNER OF DECATUR BLVD. AND PENNWOOD D AVE. (EDNA AVE. WESTERLY) NEAR THE PC OF DECATUR BLVD.	33	7C11 18SSE6	663.961	F RIVET AND SQUARE ALUMINUM PLATE IN TOP OF CURB, N NORTHEAST CORNER OF FLAMINGO RD. AND WYNN RD. D NEAR THE PC OF FLAMINGO RD.
21	CLV 1617B15	676.138	F CITY OF LAS VEGAS PIN AND PLATE IN TOP OF CURB, N SOUTHEAST CORNER OF DECATUR BLVD. AND ELDORA D AVE. NEAR THE PC OF DECATUR BLVD.	34	7C11 18S4	668.173	F RIVET AND SQUARE ALUMINUM PLATE IN TOP OF CURB, N NORTHEAST CORNER OF FLAMINGO RD. AND ARVILLE ST. D NEAR THE PC OF FLAMINGO RD.
22	7C11 17SSW6	653.350	F RIVET AND SQUARE ALUMINUM PLATE IN NORTHEAST N CORNER OF CONCRETE FOUNDATION OF DOUBLE D POWERLINE AT NORTH POLE #FL 6 AT NORTHEAST CORNER OF FLAMINGO RD. AND HIGHLAND DR.	35	7C11 18SSW6	672.823	F RIVET AND SQUARE ALUMINUM PLATE IN TOP OF CURB, N NORTHWEST CORNER OF FLAMINGO RD. BETWEEN D CAMERON ST. AND CALLE SAN REMO DR. NEAR THE PC OF CAMERON ST.
23			LOST 2003	CLARK COUNTY VERTICAL CONTROL v.2003 CLARK COUNTY SURVEYOR'S OFFICE 5051 SOUTH PARADISE ROAD LAS VEGAS, NEVADA 89119 (702) 455-0640			
24			LOST 2003				
				CONVERSION FACTOR: METERS X $\left(\frac{3937}{1200}\right)$ = U.S. SURVEY FEET REVISED 09/01/2006			
				SHEET 2 OF 4 21-61 NW			

No.	STATION	ELEVATION (METERS)	DESCRIPTION	No.	STATION	ELEVATION (METERS)	DESCRIPTION
36	7C11 18SWS	678.353	F N D RIVET AND SQUARE ALUMINUM PLATE IN TOP OF CURB, NORTHEAST CORNER OF FLAMINGO RD. AND DECATUR BLVD. NEAR THE PC OF FLAMINGO RD.	49	0C11 17S4 2000	651.611	S E T RIVET AND ROUND ALUMINUM PLATE IN TOP OF CURB, WEST SIDE OF INDUSTRIAL RD. 100' NORTH OF THE FLAMINGO RD. OVERPASS.
37			LOST 2003	50	0C11 9S6 2000	630.998	S E T RIVET AND ROUND ALUMINUM PLATE IN TOP OF CURB, NORTHEAST CORNER OF CATHEDRAL WAY AND LAS VEGAS BLVD. NEAR THE PC OF CATHEDRAL WAY.
38	7C11 17NW6	651.332	F N D RIVET AND SQUARE ALUMINUM PLATE IN TOP OF CURB, NORTHEAST CORNER OF SPRING MOUNTAIN RD. AND POLARIS AVE. NEAR PC OF SPRING MOUNTAIN RD.	51	0LV11 8SSW6	650.407	F N D CITY OF LAS VEGAS PIN AND PLATE IN TOP OF CURB, NORTHEAST CORNER OF DESERT INN RD. AND POLARIS AVE. (NOT STAMPED) NEAR THE PC OF DESERT INN RD.
39			LOST 2003	52	0LV11 8SWS	655.383	F N D CITY OF LAS VEGAS PIN AND PLATE IN TOP OF CURB, NORTHEAST CORNER OF DESERT INN RD. AND VALLEY VIEW BLVD. NEAR THE PC OF DESERT INN RD. (NOT STAMPED)
40			LOST 2003	53	0LV11 7SSE6	659.622	F N D CITY OF LAS VEGAS PIN AND PLATE IN TOP OF CURB, NORTHEAST CORNER OF DESERT INN RD. AND WYNN RD. NEAR THE PC OF DESERT INN RD. (NOT STAMPED)
41			LOST 2003	54	0LV11 7S4	663.799	F N D CITY OF LAS VEGAS PIN AND PLATE IN TOP OF CURB, NORTHEAST CORNER OF DESERT INN RD. AND ARVILLE ST. NEAR THE PC OF DESERT INN RD. (NOT STAMPED)
42			LOST 2003	55	0LV11 7SWS	675.496	F N D CITY OF LAS VEGAS PIN AND PLATE IN TOP OF CURB, NORTHEAST CORNER OF DECATUR BLVD. AND DESERT INN RD. NEAR THE PC OF DESERT INN RD. (NOT STAMPED)
43	7C11 7SSW6	669.024	F N D RIVET AND SQUARE ALUMINUM PLATE IN TOP OF CURB, NORTHEAST CORNER OF DESERT INN RD. AND CAMERON ST. NEAR THE PC OF DESERT INN RD.	56	0C11 18NWW6 2000	677.615	S E T RIVET AND ROUND ALUMINUM PLATE IN TOP OF CURB, NORTHEAST CORNER OF SPRING MOUNTAIN RD. AND DECATUR BLVD. NEAR THE PC OF DECATUR BLVD.
44			LOST 2003	57	7C11 17SWW6	660.516	F N D RIVET AND SQUARE ALUMINUM PLATE IN TOP OF CURB, NORTHEAST CORNER OF VALLEY VIEW BLVD. AND VIKING RD. NEAR THE PC OF VALLEY VIEW BLVD.
45	7C11 18SWW6	677.678	F N D RIVET AND SQUARE ALUMINUM PLATE IN TOP OF CURB, SOUTHEAST CORNER OF DECATUR BLVD. AND SUPAI DR.	58	7C11 17W4	658.113	F N D RIVET AND SQUARE ALUMINUM PLATE IN TOP OF CURB, NORTHEAST CORNER OF VALLEY VIEW BLVD. AND TWAIN AVE. NEAR THE PC OF VALLEY VIEW BLVD.
46	7C11 9SWW6 1997	637.459	S E T RIVET AND ROUND ALUMINUM PLATE IN TOP OF CURB, NORTHEAST CORNER OF INDUSTRIAL RD. AND STARDUST RD. NEAR THE PC OF INDUSTRIAL RD.	59	7C11 9NW6 1997	630.346	S E T RIVET AND ROUND ALUMINUM PLATE IN TOP OF CURB, NORTHEAST CORNER OF INDUSTRIAL RD. AND CIRCUS-CIRCUS DR. NEAR THE PC OF INDUSTRIAL RD.
47	8C11 16E6 1998	627.978	S E T RIVET AND ROUND ALUMINUM PLATE IN TOP OF CURB, NORTH SIDE OF SANDS AVE. AT MANHATTAN ST. 21 EAST OF THE PI OF MANHATTAN ST.	CLARK COUNTY VERTICAL CONTROL v.2003 CLARK COUNTY SURVEYOR'S OFFICE 5051 SOUTH PARADISE ROAD LAS VEGAS, NEVADA 89119 (702) 455-0640			
48	8C11 16C4 1998	632.008	S E T RIVET AND ROUND ALUMINUM PLATE IN TOP OF CURB, NORTH SIDE OF SANDS AVE. AT KOVAL LANE.				
				CONVERSION FACTOR: METERS X $\left(\frac{3937}{1200}\right)$ = U.S. SURVEY FEET REVISED 09/01/2006			
				SHEET 3 OF 4 21-61 NW			

No.	STATION	ELEVATION (METERS)	DESCRIPTION	No.	STATION	ELEVATION (METERS)	DESCRIPTION
60	5C11 9NE6	625.372	S E T RIVET AND ROUND ALUMINUM PLATE IN TOP OF CURB, NORTHWEST CORNER OF LAS VEGAS BLVD AND SOUTH ENTRANCE TO HILTON GRAND VACATION CLUB, NEAR THE PC OF LAS VEGAS BLVD. ± 1600' SOUTH OF SAHARA.				
61	5C11 16NW6	632.797	S E T RIVET AND ROUND ALUMINUM PLATE IN TOP OF CURB, EAST SIDE OF LAS VEGAS BLVD, ± 400' NORTH OF FASHON SHOW DRIVE.				
62	5C11 16SWW6	641.707	S E T RIVET AND ROUND ALUMINUM PLATE IN TOP OF CURB, EAST SIDE OF LAS VEGAS BLVD. IN FRONT OF 3555 LAS VEGAS BLVD. (OSHEAS CASAINO).				
				CLARK COUNTY VERTICAL CONTROL v.2003			
				CLARK COUNTY SURVEYOR'S OFFICE 5051 SOUTH PARADISE ROAD LAS VEGAS, NEVADA 89119 (702) 455-0640			
				CONVERSION FACTOR: METERS X $\left(\frac{3937}{1200}\right)$ = U.S. SURVEY FEET		REVISED 09/01/2006	SHEET 4 OF 4
							21-61 NW

Township 21 South, Range 61 East Southeast Quarter



NORTH AMERICAN VERTICAL
DATUM OF 1988
- ALL ELEVATIONS IN METERS -

No.	STATION	ELEVATION (METERS)	DESCRIPTION
1	6C11 24SSE6	598.814	F N D RIVET AND SQUARE ALUMINUM PLATE IN TOP OF CURB, NORTHEAST CORNER OF TROPICANA AVE. AND MOJAVE RD. NEAR THE PC OF TROPICANA AVE.
2	6C11 24S4	599.561	F N D RIVET AND SQUARE ALUMINUM PLATE IN TOP OF CURB, NORTHEAST CORNER OF TROPICANA AVE. AND McLEOD DR. NEAR THE PC OF TROPICANA AVE.
3	6C11 24SSW6	602.050	F N D RIVET AND SQUARE ALUMINUM PLATE IN TOP OF CURB, NORTHEAST CORNER OF TROPICANA AVE. AND TOPAZ ST. NEAR THE PC OF TROPICANA AVE.
4	6C11 24SWS	601.889	F N D RIVET AND SQUARE ALUMINUM PLATE IN TOP OF CURB, NORTHEAST CORNER OF TROPICANA AVE. AND EASTERN AVE. NEAR THE PC OF TROPICANA AVE.
5	6C11 23SSE6	606.004	F N D RIVET AND SQUARE ALUMINUM PLATE IN TOP OF CURB, NORTHEAST CORNER OF TROPICANA AVE. AND BURNHAM AVE. NEAR THE PC OF TROPICANA AVE.
6	6C11 23S4	608.631	F N D RIVET AND SQUARE ALUMINUM PLATE IN TOP OF CURB, NORTHEAST CORNER OF TROPICANA AVE. AND SPENCER ST. NEAR THE PC OF TROPICANA AVE.
7	6C11 23SSW6	611.761	F N D RIVET AND SQUARE ALUMINUM PLATE IN TOP OF CURB, NORTHEAST CORNER OF TROPICANA AVE. AND TAMARUS ST. IN FRONT OF A LIGHT POLE.
8			LOST 2003
9			LOST 2003
10			LOST 2003
11			LOST 2003

CLARK COUNTY VERTICAL CONTROL v.2003

CLARK COUNTY SURVEYOR'S OFFICE
5051 SOUTH PARADISE ROAD
LAS VEGAS, NEVADA 89119
(702) 455-0640

CONVERSION FACTOR:
METERS X $\left(\frac{3937}{1200}\right)$ = U.S. SURVEY FEET

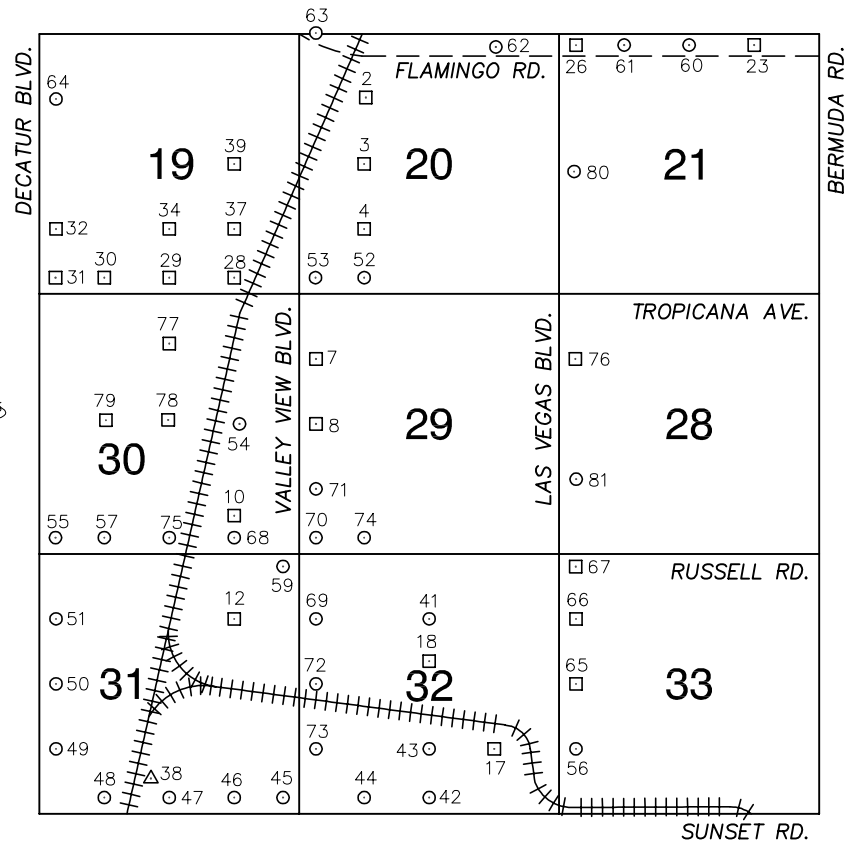
REVISED
09/01/2006

SHEET
1 OF 4

21-61
SE

No.	STATION	ELEVATION (METERS)	DESCRIPTION	No.	STATION	ELEVATION (METERS)	DESCRIPTION
36	7C11 25NW6	607.077	F N RIVET AND SQUARE ALUMINUM PLATE IN TOP OF CURB, D NORTHWEST CORNER OF TOPAZ ST. AND RENO AVE. NEAR THE PC OF TOPAZ ST.	49			LOST 2006
37	7C11 25W6	606.047	F N RIVET AND SQUARE ALUMINUM PLATE IN TOP OF CURB, D SOUTHEAST CORNER OF HACIENDA AVE. AND HARRISON DR. JUST WEST OF THE WEST DRIVEWAY GOING INTO 2825 HACIENDA AVE.	50			LOST 2006
38	7C11 25SSE6	601.330	F N RIVET AND SQUARE ALUMINUM PLATE IN TOP OF CURB, D NORTHWEST CORNER OF RUSSELL RD. AND MOJAVE RD. NEAR THE PC OF RUSSELL RD.	51			LOST 2006
39			LOST 2003	52	7C11 36E6 1997	596.407	S RIVET AND ROUND ALUMINUM PLATE IN TOP OF CURB, E SOUTH SIDE OF PATRICK LN. IN FRONT OF A METAL T LIGHT POLE NEAR THE WEST DRIVEWAY OF 3245 PATRICK LN.
40			LOST 2003	53	8C11 23SWS 1998	615.729	S RIVET AND ROUND ALUMINUM PLATE IN TOP OF CURB, E NORTHEAST CORNER OF TROPICANA AVE. AND T MARYLAND PKWY. NEAR THE PC OF TROPICANA AVE.
41	7C11 26SSE6	615.915	F N RIVET AND SQUARE ALUMINUM PLATE IN TOP OF CURB, D NORTHEAST CORNER OF RUSSELL RD. AND BURNHAM AVE. IN FRONT OF 2120 RUSSELL RD.	54	8C11 22SSE6 1998	620.261	S RIVET AND ROUND ALUMINUM PLATE IN TOP OF CURB, E NORTHEAST CORNER OF TROPICANA AVE. AND WILBUR T ST.-THOMAS & MACK DR. IN A PORK CHOP ISLAND.
42	7C11 26S4	617.494	F N RIVET AND SQUARE ALUMINUM PLATE IN TOP OF CURB, D NORTHEAST CORNER OF RUSSELL RD. AND SPENCER ST. NEAR THE PC OF RUSSELL RD.	55	8C11 22S4 1998	623.676	S RIVET AND ROUND ALUMINUM PLATE IN TOP OF CURB, E NORTHEAST CORNER OF TROPICANA AVE. AND SWENSON T ST. NEAR THE PC OF TROPICANA AVE.
43			LOST 2003	56	8C11 22SSW6 1998	627.589	S RIVET AND ROUND ALUMINUM PLATE IN TOP OF CURB, E NORTHEAST CORNER OF TROPICANA AVE. AND PARADISE T RD. NEAR THE PC OF TROPICANA AVE.
44			LOST 2003	57	8C11 22SW6 1998	625.911	S RIVET AND ROUND ALUMINUM PLATE IN TOP OF CURB, E NORTHEAST CORNER OF PARADISE RD. AND NAPLES DR. T NEAR THE PC OF PARADISE RD.
45			LOST 2003	58	8C11 22W6 1998	625.835	S RIVET AND ROUND ALUMINUM PLATE IN TOP OF CURB, E NORTHEAST CORNER OF PARADISE RD. AND HARMON T AVE. NEAR THE PC OF PARADISE RD.
46			LOST 2003	59	8C11 24W4 1998	596.261	S RIVET AND ROUND ALUMINUM PLATE IN TOP OF CURB, E NORTHEAST CORNER OF EASTERN AVE. AND HARMON T AVE. NEAR THE PC OF EASTERN AVE.
47			LOST 2003	CLARK COUNTY VERTICAL CONTROL v.2003 CLARK COUNTY SURVEYOR'S OFFICE 5051 SOUTH PARADISE ROAD LAS VEGAS, NEVADA 89119 (702) 455-0640			
48			LOST 2003				
				CONVERSION FACTOR: METERS X $\left(\frac{3937}{1200}\right)$ = U.S. SURVEY FEET REVISED 09/01/2006			
				SHEET 3 OF 4 21-61 SE			

Township 21 South, Range 61 East Southwest Quarter



NORTH AMERICAN VERTICAL
DATUM OF 1988
- ALL ELEVATIONS IN METERS -

No.	STATION	ELEVATION (METERS)	DESCRIPTION
1			LOST 1992
2	6C11 20NW6	653.563	F N D RIVET AND SQUARE ALUMINUM PLATE IN TOP OF CURB, WEST SIDE OF POLARIS AVE. ± 1320 FEET NORTH OF HARMON AVE, IN FRONT OF 4285 POLARIS AVE.
3	6C11 20W6	654.323	F N D RIVET AND SQUARE ALUMINUM PLATE IN TOP OF CURB, SOUTHEAST CORNER OF POLARIS AVE. AND HARMON AVE. NEAR PC OF HARMON AVE.
4	6C11 20SW6	659.200	F N D RIVET AND SQUARE ALUMINUM PLATE IN TOP OF CURB, NORTHEAST CORNER OF POLARIS AVE. AND TOMPKINS AVE. NEAR THE PC OF POLARIS AVE.
5			LOST 2003
6			LOST 2003
7	6C11 29NWW6	668.497	F N D RIVET AND SQUARE ALUMINUM PLATE IN TOP OF CURB, SOUTHEAST CORNER OF VALLEY VIEW BLVD. AND RENO AVE. NEAR THE PC OF VALLEY VIEW BLVD.
8	6C11 29W4	670.697	F N D RIVET AND SQUARE ALUMINUM PLATE IN TOP OF CURB, NORTHEAST CORNER OF HACIENDA AVE. AND VALLEY VIEW BLVD. NEAR THE PC OF VALLEY VIEW BLVD.
9			LOST 2003
10	6C11 30SE6	680.714	F N D RIVET AND ROUND ALUMINUM PLATE IN TOP OF CURB, NORTHEAST CORNER OF WYNN RD. AND DEWEY DR. NEAR THE PC OF WYNN RD.
11			LOST 2003

CLARK COUNTY VERTICAL CONTROL v.2003

CLARK COUNTY SURVEYOR'S OFFICE
5051 SOUTH PARADISE ROAD
LAS VEGAS, NEVADA 89119
(702) 455-0640

CONVERSION FACTOR:

METERS X $\left(\frac{3937}{1200}\right)$ = U.S. SURVEY FEET

REVISED
09/01/2006

SHEET
1 OF 4

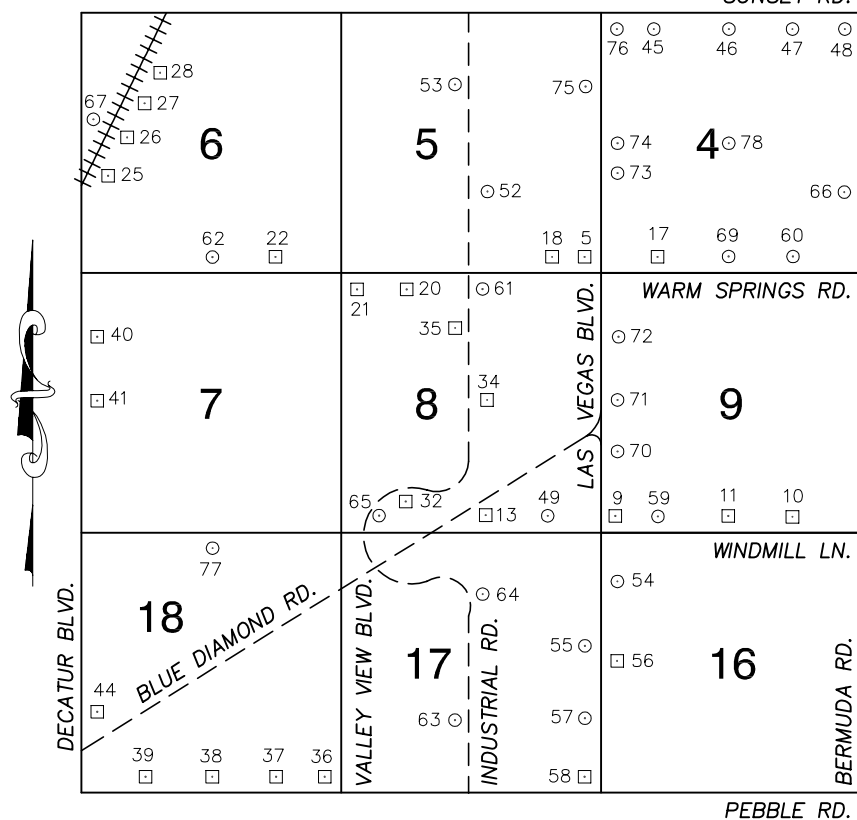
21-61
SW

No.	STATION	ELEVATION (METERS)	DESCRIPTION	No.	STATION	ELEVATION (METERS)	DESCRIPTION
60	0C11 21N4 2000	632.742	S E T RIVET AND ROUND ALUMINUM PLATE IN TOP OF CURB, NORTHEAST CORNER OF FLAMINGO RD. AND KOVAL LN. NEAR THE PC OF FLAMINGO RD.	73	0C11 32SWW6 2000	685.505	S E T RIVET AND ROUND ALUMINUM PLATE IN TOP OF CURB, NORTHEAST CORNER OF VALLEY VIEW BLVD. AND POST RD. NEAR THE PC OF VALLEY VIEW BLVD.
61	0C11 21NNW6 2000	636.461	S E T RIVET AND ROUND ALUMINUM PLATE IN TOP OF CURB, NORTHEAST CORNER OF FLAMINGO RD. AND AUDRIE ST. NEAR THE PC OF FLAMINGO RD.	74	0C11 29SSW6 2000	674.147	S E T RIVET AND ROUND ALUMINUM PLATE IN TOP OF CURB, NORTHEAST CORNER OF RUSSELL RD. AND POLARIS AVE. NEAR THE PC OF RUSSELL RD.
62	0C11 20NNE6 2000	645.710	S E T RIVET AND ROUND ALUMINUM PLATE IN POWER POLE BASE ON THE NORTH SIDE OF FLAMINGO RD. AT THE ENTRANCE TO I-15	75	0C11 30S4 2000	684.578	S E T RIVET AND ROUND ALUMINUM PLATE IN TOP OF CURB, NORTHEAST CORNER OF RUSSELL RD. AND ARVILLE ST. NEAR THE PC OF RUSSELL RD.
63	0C11 20NWS 2000	656.086	S E T RIVET AND ROUND ALUMINUM PLATE IN TOP OF CURB, NORTHEAST CORNER OF FLAMINGO RD AND VALLEY VIEW BLVD. NEAR THE PC OF FLAMINGO RD.	76	4C11 28NWW6	650.667	F N D RIVET AND SQUARE ALUMINUM PLATE IN TOP OF CURB, NORTHEAST CORNER OF RENO AVE. AND LAS VEGAS BLVD. NEAR THE PT OF LAS VEGAS BLVD.
64	0C11 19NWW6 2000	680.651	S E T RIVET AND ROUND ALUMINUM PLATE IN TOP OF CURB, NORTHEAST CORNER OF DECATUR BLVD. AND ROCHELLE AVE. NEAR THE PC OF DECATUR BLVD.	77	9C11 30N6	678.126	F N D RIVET AND SQUARE ALUMINUM PLATE IN TOP OF CURB, NORTHWEST CORNER OF ARVILLE ST. AND RENO AVE. NEAR THE PC OF ARVILLE ST.
65	4C11 33W4	664.411	F N D RIVET AND SQUARE ALUMINUM PLATE IN TOP OF ISLAND NOSE, EAST SIDE OF LAS VEGAS BLVD. AT THE ENTRANCE TO McCARRAN AIRPORT.	78	9C11 30C4	682.033	F N D RIVET AND SQUARE ALUMINUM PLATE IN TOP OF CURB, SOUTHWEST CORNER OF ARVILLE ST. AND HACIENDA AVE. NEAR THE PC OF HACIENDA AVE.
66	4C11 33NWW6	662.310	F N D RIVET AND SQUARE ALUMINUM PLATE IN TOP OF CURB, EAST SIDE OF LAS VEGAS BLVD. AT 5195 LAS VEGAS BLVD. SO. 3' WEST OF A FIRE HYDRANT.	79	9C11 30W6	684.424	F N D RIVET AND SQUARE ALUMINUM PLATE IN TOP OF CURB, SOUTHEAST CORNER OF HACIENDA AVE. AND CAMERON ST. NEAR THE PT OF HACIENDA AVE.
67	4C11 33NWS	658.763	F N D RIVET AND SQUARE ALUMINUM PLATE IN TOP OF CURB, EAST SIDE OF LAS VEGAS BLVD. 150' SOUTH OF RUSSELL RD.	80	5C11 21W4	645.098	S E T RIVET AND ROUND ALUMINUM PLATE IN TOP OF CURB, SOUTH EAST CORNER OF LAS VEGAS BLVD. AND HARMON AVE. NEAR THE PC OF LAS VEGAS BLVD.
68	0C11 30SSE6 2000	680.796	S E T RIVET AND ROUND ALUMINUM PLATE IN TOP OF CURB, NORTHEAST CORNER OF RUSSELL RD. AND WYNN RD. NEAR THE PC OF RUSSELL RD.	81	5C11 28SWW6	652.692	S E T RIVET AND ROUND ALUMINUM PLATE IN TOP OF CURB, EAST SIDE OF LAS VEGAS BLVD. IN FRONT OF 3951 LAS VEGAS BLVD. (MANDALEY BAY HOTEL), ± 1600' NORTH OF RUSSELL RD.
69	0C11 32NWW6 2000	680.082	S E T RIVET AND ROUND ALUMINUM PLATE IN TOP OF CURB, NORTHEAST CORNER OF VALLEY VIEW BLVD. AND OQUENDO RD. NEAR THE PC OF VALLEY VIEW BLVD.	82			
70	0C11 29SWS 2000	678.032	S E T RIVET AND ROUND ALUMINUM PLATE IN TOP OF CURB, NORTHEAST CORNER OF VALLEY VIEW BLVD. AND RUSSELL RD. NEAR THE PC OF RUSSELL RD.	83			
71	0C11 29SWW6 2000	676.978	S E T RIVET AND ROUND ALUMINUM PLATE IN TOP OF CURB, NORTHEAST CORNER OF VALLEY VIEW BLVD. AND DIABLO DR. NEAR THE PC OF VALLEY VIEW BLVD.	CLARK COUNTY VERTICAL CONTROL v.2003 CLARK COUNTY SURVEYOR'S OFFICE 5051 SOUTH PARADISE ROAD LAS VEGAS, NEVADA 89119 (702) 455-0640			
72	0C11 32W4 2000	684.406	S E T RIVET AND ROUND ALUMINUM PLATE IN TOP OF CURB, EAST SIDE OF VALLEY VIEW BLVD. 75' NORTH OF THE RAILROAD CROSSING.				
				CONVERSION FACTOR: METERS X $\left(\frac{3937}{1200}\right)$ = U.S. SURVEY FEET REVISED 09/01/2006			
				SHEET 4 OF 4 21-61 SW			

No.	STATION	ELEVATION (METERS)	DESCRIPTION		No.	STATION	ELEVATION (METERS)	DESCRIPTION	
60	8C20 3SSE6 1998	770.772	S E T	RIVET AND ROUND ALUMINUM PLATE IN TOP OF CURB, NORTHWEST CORNER OF WARM SPRING RD. AND MONTESSOURI ST. NEAR THE PC OF WARM SPRINGS RD.	73				
61	8C20 3S4 1998	775.893	S E T	RIVET AND ROUND ALUMINUM PLATE IN A CONCRETE MONUMENT, NORTHEAST QUADRANT OF WARM SPRINGS RD. AND TENAYA WAY.	74				
62	7C20 1SES 1997	719.785	S E T	RIVET AND ROUND ALUMINUM PLATE IN A CONCRETE MONUMENT, NORTHWEST QUADRANT OF WARM SPRINGS RD. AND DECATUR BLVD. NEAR THE SOUTHEAST FENCE CORNER OF THE WATER DISTRICT YARD.	75				
63	7C20 2SWS 1997	765.149	S E T	RIVET AND ROUND ALUMINUM PLATE IN THE CONCRETE BASE OF A METAL POWER POLE, NORTHEAST CORNER OF RAINBOW BLVD. AND WARM SPRINGS RD. POLE # "95650"	76				
64	4C20 15W6	801.788	F N D	RIVET AND SQUARE ALUMINUM PLATE IN A ELECTRICAL, TRANSFORMER PAD, NORTH SIDE OF WIGWAM AVE. 250' EAST OF JERLYN ST.	77				
65	4C20 15C4	793.110	F N D	RIVET AND SQUARE ALUMINUM PLATE IN A CONCRETE MONUMENT, NORTHEAST QUADRANT OF WIGWAM AVE. AND TENAYA WAY.	78				
66	4C20 15E6	786.482	F N D	RIVET AND SQUARE ALUMINUM PLATE IN A CONCRETE MONUMENT, NORTH SIDE OF WIGWAM AVE. AND 1300' WEST OF RAINBOW BLVD.	79				
67					80				
68					81				
69					82				
70					83				
71					CLARK COUNTY VERTICAL CONTROL v.2003 CLARK COUNTY SURVEYOR'S OFFICE 5051 SOUTH PARADISE ROAD LAS VEGAS, NEVADA 89119 (702) 455-0640				
72									
					CONVERSION FACTOR: METERS X $\left(\frac{3937}{1200}\right)$ = U.S. SURVEY FEET <div> REVISED 09/01/2006 </div> <div> SHEET 4 OF 4 </div> <div> 22-60 NE </div>				

Township 22 South, Range 61 East Northwest Quarter

SUNSET RD.



NORTH AMERICAN VERTICAL
DATUM OF 1988
- ALL ELEVATIONS IN METERS -

No.	STATION	ELEVATION (METERS)	DESCRIPTION
1			LOST 2003
2			LOST 2003
3			LOST 2003
4			LOST 2003
5	8C21 5SES	681.375	FND RIVET AND SQUARE ALUMINUM PLATE IN TOP OF CURB, NORTHWEST CORNER OF LAS VEGAS BLVD. AND WARM SPRINGS RD. 150' WEST OF INTERSECTION. (NEAR MAILBOX)
6			LOST 2003
7			LOST 2003
8			LOST 2003
9	0C21 9SWS	683.685	FND RIVET AND SQUARE ALUMINUM PLATE IN TOP OF CURB OF PLANTER, NEAR 1/2 DELTA. NORTHEAST CORNER OF LAS VEGAS BLVD. AND WINDMILL LN.
10	0C21 9SSE6	669.441	FND RIVET AND SQUARE ALUMINUM PLATE IN AN ELECTRICAL TRANSFORMER BOX PAD, NORTH SIDE WINDMILL LN. 150' WEST OF PLACID ST.
11	0C21 9S4	675.217	FND RIVET AND SQUARE ALUMINUM PLATE IN AN ELECTRICAL TRANSFORMER PAD, NORTH SIDE OF WINDMILL LN. NEAR THE EAST PROPERTY LINE OF 170 WINDMILL LN.
CLARK COUNTY VERTICAL CONTROL v.2003			
CLARK COUNTY SURVEYOR'S OFFICE 5051 SOUTH PARADISE ROAD LAS VEGAS, NEVADA 89119 (702) 455-0640			CONVERSION FACTOR: METERS X $\left(\frac{3937}{1200}\right)$ = U.S. SURVEY FEET
REVISED 09/01/2006		SHEET 1 OF 4	22-61 NW

No.	STATION	ELEVATION (METERS)	DESCRIPTION	No.	STATION	ELEVATION (METERS)	DESCRIPTION
60	7C21 4SSE6 1997	663.773	S E T RIVET AND ROUND ALUMINUM PLATE IN TOP OF CURB, NORTHEAST CORNER OF WARM SPRINGS RD. AND PLACID ST. NEAR THE PC OF WARM SPRINGS RD.	73	0C21 4SWW6 2000	678.805	S E T RIVET AND ROUND ALUMINUM PLATE IN TOP OF CURB, SOUTHEAST CORNER OF LAS VEGAS BLVD. AND THE ON RAMP TO I-215 EAST BOUND. NEAR THE PC OF LAS VEGAS BLVD.
61	7C21 8N4 1997	692.747	S E T RIVET AND ROUND ALUMINUM PLATE IN TOP OF CURB, SOUTHEAST CORNER OF WARM SPRINGS RD. AND INDUSTRIAL RD. NEAR THE PC OF INDUSTRIAL RD.	74	0C21 4W4 2000	677.578	S E T RIVET AND ROUND ALUMINUM PLATE IN TOP OF CURB, NORTHEAST CORNER OF LAS VEGAS BLVD. AND I-215 WEST BOUND OFF RAMP NEAR THE PC OF LAS VEGAS BLVD.
62	7C21 6S4 1997	709.422	S E T RIVET AND ROUND ALUMINUM PLATE IN TOP OF CURB, NORTHEAST CORNER OF WARM SPRINGS RD. AND ARVILLE ST. NEAR THE PC OF WARM SPRINGS RD.	75	4C21 5NEE6	675.648	F N D 2" BRASS CAP IN TOP OF CURB, SOUTHWEST CORNER OF LAS VEGAS BLVD. AND THE NORTH ENTRANCE TO VACATION VILLAGE, NEAR THE PC OF LAS VEGAS BLVD.
63	7C21 17S6 1997	695.307	S E T RIVET AND ROUND ALUMINUM PLATE IN AN ELECTRICAL TRANSFORMER PAD. (# R392) WEST SIDE OF INDUSTRIAL RD. 175' SOUTH OF FORD AVE.	76	4C21 4NWS	672.297	F N D 2" DOME BRASS CAP ON TOP OF CURB, SOUTHEAST CORNER OF SUNSET RD. AND LAS VEGAS BLVD. NEAR THE PC OF SUNSET RD.
64	7C21 17N6 1997	693.815	S E T RIVET AND ROUND ALUMINUM PLATE IN TOP OF CURB, EAST SIDE OF INDUSTRIAL RD. 18' NORTH OF THE PC ON INDUSTRIAL RD. AT THE SOUTH END OF SILVERTON RV PARK.	77	0C21 18N4 2000	711.894	S E T RIVET AND ROUND ALUMINUM PLATE IN 8' X 8' CONCRETE PAD FOR WATER MANHOLE, ±50' EAST OF ARVILLE ST. AND ±150' SOUTH OF WINDMILL LN.
65	7C21 8SSW6 1997	698.334	S E T RIVET AND ROUND ALUMINUM PLATE IN TOP OF CURB, NORTHEAST CORNER OF BLUE DIAMOND RD. AND INDUSTRIAL RD. 25' NORTH OF THE PC OF INDUSTRIAL RD.	78	4C21 4C4	667.889	RIVET AND SQUARE ALUMINUM PLATE IN TOP OF CURB, SOUTHEAST CORNER OF GILESPIE ST. AND HIDDEN WELL RD. NEAR THE PC OF GILESPIE ST.
66	8C21 4SEE6 1998	657.635	S E T RIVET AND ROUND ALUMINUM PLATE IN TOP OF CURB, SOUTHWEST CORNER OF BERMUDA RD. AND ARBY AVE. NEAR THE PC OF BERMUDA RD.	79			
67	7C21 6W4 1997	714.128	S E T RIVET AND ROUND ALUMINUM PLATE IN A CONCRETE MONUMENT, NORTHEAST QUADRANT OF DECATUR BLVD. AND MAULE AVE.	80			
68			LOST 2003	81			
69	0C21 4S4 2000	670.606	S E T RIVET AND ROUND ALUMINUM PLATE IN TOP OF CURB, NORTHEAST CORNER OF WARM SPRINGS RD. AND GILESPIE ST. NEAR THE PC OF WARM SPRINGS RD.	82			
70	0C21 9SWW6 2000	683.200	S E T RIVET AND ROUND ALUMINUM PLATE IN TOP OF CURB, NORTHEAST CORNER OF LAS VEGAS BLVD. AND MESA VERDE LN. NEAR THE PC OF LAS VEGAS BLVD.	83			
71	0C21 9W4 2000	681.328	S E T RIVET AND ROUND ALUMINUM PLATE IN TOP OF CURB, NORTHEAST CORNER OF LAS VEGAS BLVD. AND ROBINDALE LN. NEAR THE PC OF LAS VEGAS BLVD.	CLARK COUNTY VERTICAL CONTROL v.2003 CLARK COUNTY SURVEYOR'S OFFICE 5051 SOUTH PARADISE ROAD LAS VEGAS, NEVADA 89119 (702) 455-0640			
72	0C21 9NWW6 2000	681.765	S E T RIVET AND ROUND ALUMINUM PLATE IN TOP OF CURB, NORTHEAST CORNER OF LAS VEGAS BLVD. AND ELDORADO ST. NEAR THE PC OF LAS VEGAS BLVD. AT THE ENTRANCE TO BELZ OUTLET.				
				CONVERSION FACTOR: METERS X $\left(\frac{3937}{1200}\right)$ = U.S. SURVEY FEET <div> REVISED 09/01/2006 </div> <div> SHEET 4 OF 4 </div> <div> 22-61 NW </div>			

No.	STATION	ELEVATION (METERS)	DESCRIPTION	No.	STATION	ELEVATION (METERS)	DESCRIPTION
12			LOST 2003	25	J	829.097	FND USC&GS BRASS CAP ON A 4" IRON PIPE, 200' NORTH OF THE RAILROAD TRACKS STAMPED "U+S"
13			LOST 2003	26	8C31 18N6 1998	826.680	SET RIVET AND ROUND ALUMINUM PLATE IN A CONCRETE MONUMENT, 21' WEST OF A JEEP TRAIL, 0.45 MILES NORTHWEST ALONG JEEP TRAIL FROM 8C31/18S6
14	0C31 5N6	724.306	FND INVERTED ALUMINUM MONUMENT, EAST SIDE OF INDUSTRIAL RD. 0.25 MILES NORTH OF BARBARA LN.	27	8C31 18SE6 1998	808.789	SET RIVET AND ROUND ALUMINUM PLATE IN A CONCRETE MONUMENT, 80' NORTH OF THE RUINS OF A STONE BUILDING, NEAR A JEEP TRAIL.
15			LOST 2003	28	E 146 1958	748.418	FND USC&GS BRASS CAP, 0.2 MILES EAST OF SOUTHERN HIGHLANDS PKWY. AND 200 FEET SOUTH OF ROBERT TRENT JONES LN.
16	4C31 5NES	720.390	FND RIVET AND SQUARE ALUMINUM PLATE IN A CONCRETE MONUMENT, SOUTHWEST QUADRANT OF LAS VEGAS BLVD. AND STARR AVE.	29	GIS 866	802.171	FND 2" BRASS CAP IN CONCRETE, ± 90 FEET NORTHEAST OF SECTION CORNER AT DECATUR AVE AND BRUNER AVE.
17	4C31 5NEE6	727.205	FND RIVET AND SQUARE ALUMINUM PLATE IN A CONCRETE MONUMENT, SOUTHWEST QUADRANT OF LAS VEGAS BLVD. AND NEAL AVE.	30	3C31 6NNE6 2003	714.971	SET RIVET AND ROUND ALUMINUM PLATE IN TOP OF CURB, SOUTHEAST CORNER OF SOUTHERN HIGHLANDS PKWY AND VALLEY VIEW BLVD, NEAR THE PC OF SOUTHERN HIGHLANDS PKWY.
18	4C31 5E4	734.635	FND RIVET AND SQUARE ALUMINUM PLATE IN A CONCRETE DRAIN HEADWALL ON THE WEST SIDE OF LAS VEGAS BLVD. 0.25 MILES NORTH OF DESERT PALM DR.	31	3C31 5NWW6 2003	720.405	SET RIVET AND ROUND ALUMINUM PLATE IN TOP OF CURB, EAST SIDE OF SOUTHERN HIGHLANDS PKWY ± 0.25 MILES NORTH OF THE INTERSECTION OF INDUSTRIAL RD AND SOUTHERN HIGHLANDS PKWY.
19	4C31 5SEE6	740.393	FND RIVET AND SQUARE ALUMINUM PLATE IN A CONCRETE ELEC. TRANSFORMER PAD, 200' WEST OF LAS VEGAS BLVD. ON THE SOUTH SIDE OF JONATHAN DR.	32	3C31 5W6 2003	727.570	SET RIVET AND ROUND ALUMINUM PLATE IN TOP OF CURB, SOUTHEAST CORNER OF SOUTHERN HIGHLANDS PKWY AND INDUSTRIAL RD, NEAR THE PC OF SOUTHERN HIGHLANDS PKWY.
20	4C31 5SES	746.311	FND RIVET AND SQUARE ALUMINUM PLATE IN A CONCRETE MONUMENT, NORTHWEST QUADRANT OF LAS VEGAS BLVD. AND BRUNER AVE.	33	3C31 5SW6 2003	733.757	SET RIVET AND ROUND ALUMINUM PLATE IN TOP OF CURB, EAST SIDE OF SOUTHERN HIGHLANDS PKWY ± 0.15 MILES NORTH OF THE INTERSECTION OF DANCING WINDS PLACE AND SOUTHERN HIGHLANDS PKWY.
21	8C31 8E4 1998	758.480	SET RIVET AND ROUND ALUMINUM PLATE IN A CONCRETE HEADWALL, WEST SIDE OF LAS VEGAS BLVD. 230' NORTH OF DALE AVE.	34	3C31 8NNW6 2003	739.197	SET RIVET AND ROUND ALUMINUM PLATE IN TOP OF CURB, EAST SIDE OF SOUTHERN HIGHLANDS PKWY ± 0.3 MILES NORTH OF THE INTERSECTION OF ROBERT TRENT JONES LN AND SOUTHERN HIGHLANDS PKWY.
22	8C31 17NES 1998	771.299	SET RIVET AND ROUND ALUMINUM PLATE IN A CONCRETE HEADWALL, WEST SIDE OF LAS VEGAS BLVD. SOUTH OF WESTERLY ALIGNMENT OF LARSON LN.	35	3C31 8NW6 2003	743.040	SET RIVET AND ROUND ALUMINUM PLATE IN TOP OF CURB, SOUTHEAST CORNER OF SOUTHERN HIGHLANDS PKWY AND ROBERT TRENT JONES LN NEAR THE PC OF SOUTHERN HIGHLANDS PKWY.
23	8C31 17E6 1998	785.306	SET RIVET AND ROUND ALUMINUM PLATE IN A CONCRETE MONUMENT, SOUTHEAST CORNER OF LAS VEGAS BLVD. AND ROBAN ST.	CLARK COUNTY VERTICAL CONTROL v.2003 CLARK COUNTY SURVEYOR'S OFFICE 5051 SOUTH PARADISE ROAD LAS VEGAS, NEVADA 89119 (702) 455-0640			
24	GAP OFFSET 1958	786.157	FND USC&GS BRASS CAP SET IN ROCK 0.62 MILES SOUTH OF THE INTERSECTION OF ST. ROSE PRKWY. (S.R. 146) AND I-15 OVERPASS, 0.12 MILES EAST OF I-15 AT TOP OF APPROX. 100' TALL ROCK OUTCROPPING.				
				CONVERSION FACTOR: METERS X $\left(\frac{3937}{1200}\right)$ = U.S. SURVEY FEET			
				REVISED 09/01/2006		SHEET 2 OF 2	23-61 NW